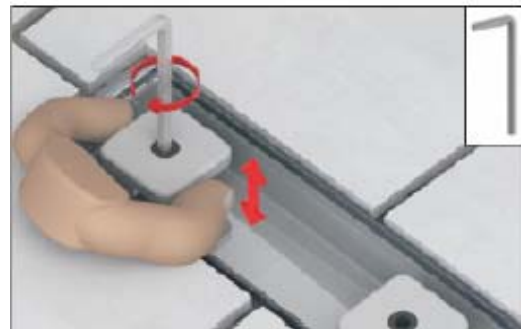
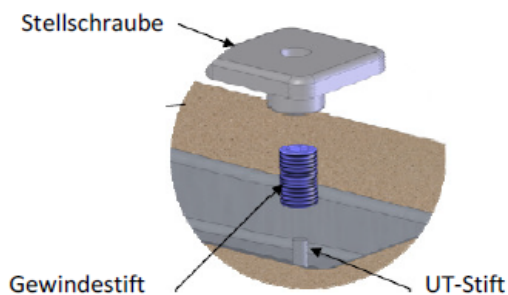


PRODUCT - INFORMATION # 6 / 2013

New at HL



HL50 – series: Improvement of cleaning possibility



Product description

One of the main advantages of the HL 50 shower channel is the quick adjustment of the height of the cover due to the patented adjustment screws.

In the future this solution will be again improved.

This change concerns the adjustment in height of the cover by using a new screw system. So far these screws had to be unscrewed for cleaning and afterwards had to be screwed on and again had to be adjusted.

In the future this process is necessary only once (at the first installation).

After that the height of the screw is fixed forever. For cleaning the screws may be pulled out and then pushed on again without changing the height adjustment. This simplifies both installation and cleaning.

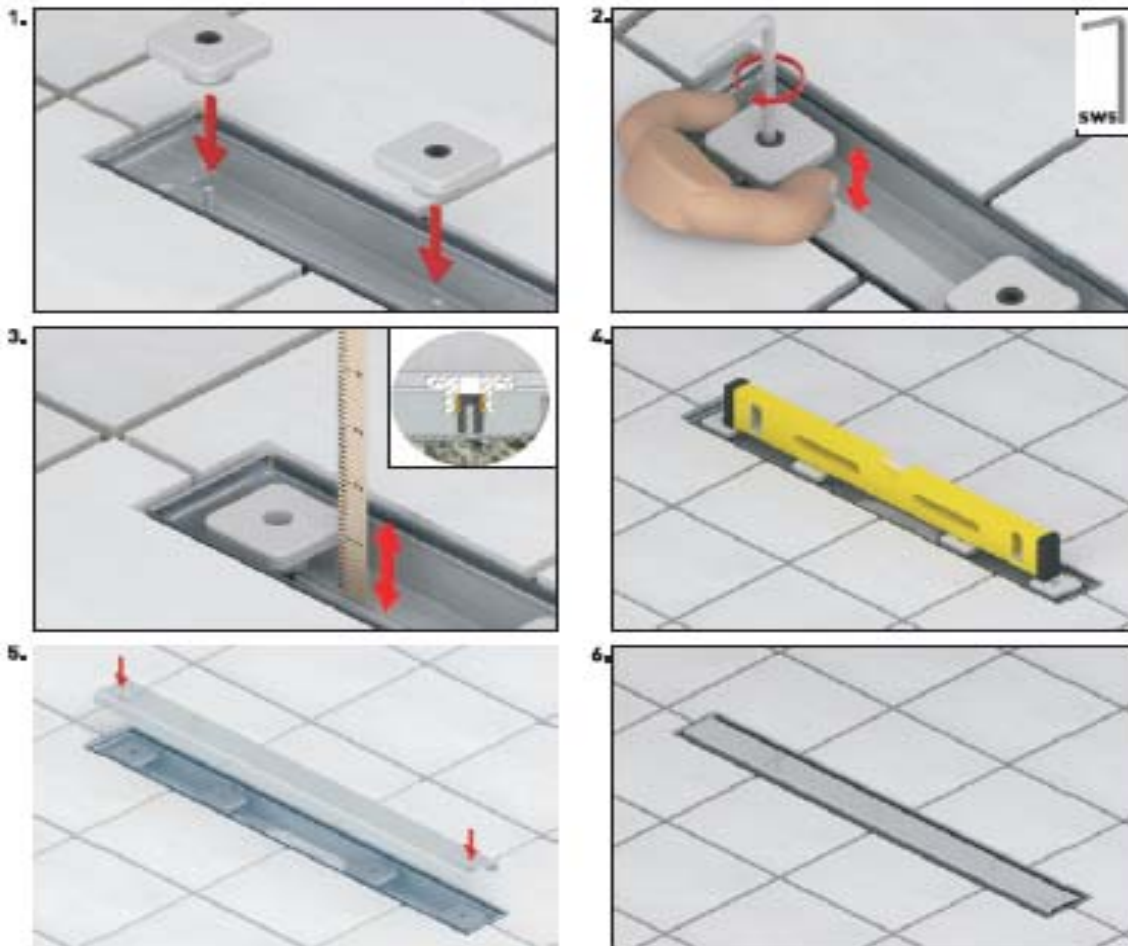
This is new:

1. The old threaded bolts (M8) are substituted by thin bolts without thread (UT-bolts, d 4mm).

→ **Dirt (hair) is not caught in the thread any more**

2. An additional plastic thread sleeve (M10) is responsible for the height adjustment together with a new developed screw.

→ **The height is adjusted by an Allen key (included in package).**



Spareparts:

HL050.2EN Adjustment screws short

Package: 2 pieces/PE-bag

Weight: 0,24 kg

EAN-Code: 9003076037346

Price: unchanged like HL050.2E



HL050.3EN Adjustment screws long

Package: 2 pieces/PE-bag

Weight: 0,30 kg

EAN-Code: 9003076037339

Price: unchanged like HL050.3E

