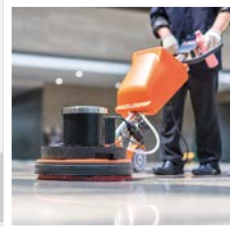
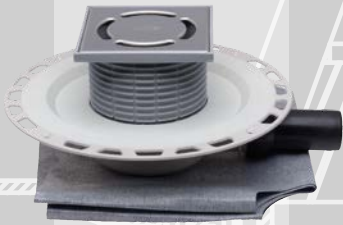


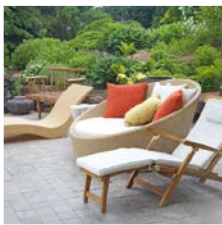


SIPHONS ABLÄUFE

Ø 354



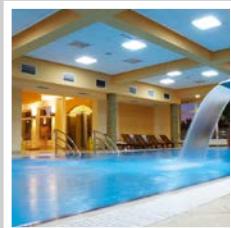
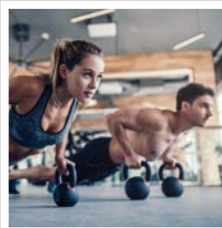
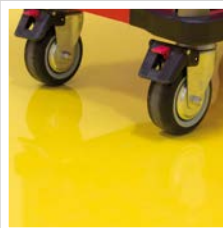
101



HL Drains

13. Floor

13



## HL Floor drains

### Basic information about design and installation

Floor drains serve as central drainage of floor surfaces. To reach a satisfying result, aesthetic and functional, the plumber has to care for some important topics. The coordination of the different craftsmen (designer, construction company, plumber, tiler..) is the biggest challenge for the plumber. Therefore please notice already during planning and design, some topics:

#### ▲ Function:

The question, how the drain is finally used, decides already during design of the drainage system the choice of the gully. Generally one differs between permanent use (places, where splashing water occurs, e.g. shower) and irregular use (e.g. as safety drain in laundry rooms).

#### ▲ Stench trap:

Especially at rarely used drain spots one has to avoid, that stench rises from the sewage system. A classic solution is to use a drain with additional side inlet (HL300, HL304). A regularly used drain spot (e.g. washing basin) makes sure, that the trap cannot become dry. In this case the drain should be constructed backwater save, so that the wastewater from the basin cannot overflow on the floor. Also the inlet should be siphoned in the drain itself. Another solution for this problem is the wellknown drain-series „Primus“ of HL. These drains have a normal water siphon and a mechanical trap. A floating body is part of a normal water trap. When the water evaporates in the trap (or is sucked out by vacuum in the sewage system), the floating body sinks on the mouth of the drain and closes it.

#### Primusblue system

The Primusblue is a combined odor trap with sealing water and mechanical odor barrier, which provides absolute odor-tightness and even more protection against unpleasant odors from the sewer. With a tightness at positive pressure up to +800 pascal and negative pressure up to 400 Pascal Primusblue offers greater safety compared to conventional water odor seals with 50 mm barrier water. Another benefit is the function of backflow tightness up to a pressure of 0.5 mWs. The backflow of wastewater in the case of unfavorably laid pipes (e.g. from the bathtub or during backwashing in the swimming pool) is effectively prevented. (ÖNORM B2501)

#### ▲ Capacity:

The test procedure for evaluating the drain capacity for floor drains is made according EN 1253-1: 2015 with 20 mm impounded water above the grate. If floor drains are used for barrier-free showers, the plumber should take care, that the flow rate is higher than the water inlet from the shower, to avoid water running into the dry area of the bathroom.

#### ▲ Waterproofing:

To avoid leakage water to get into the floor construction, the floor drain has to be connected to the on-site waterproofing. **Attention: Gaps between tiles are not waterproof!** In most cases the waterproofing (mostly liquid compounds) is located directly under the tiles. HL floor drains are equipped with flanges, on which the plumber may install the right sealing kit. The installer, together with the tiler, should decide, which. To apply the waterproofing material directly on the flange, is not waterproof.

#### ▲ Sound protection:

Please see chapter „accessories“ on page 266

#### ▲ Installation:

When the floor drain is mounted, the level of the flange should be below the level of the screed, so that a sufficient incline to the drain is possible. Attention: The height of the drain body is not the minimum height of the screed.

#### ▲ Design:

Depending on taste and function, you may choose different types of grates and extensions. The plumber should first talk to the enduser, which one he prefers, as a subsequent change is not always possible.

#### Relevant standards/directives

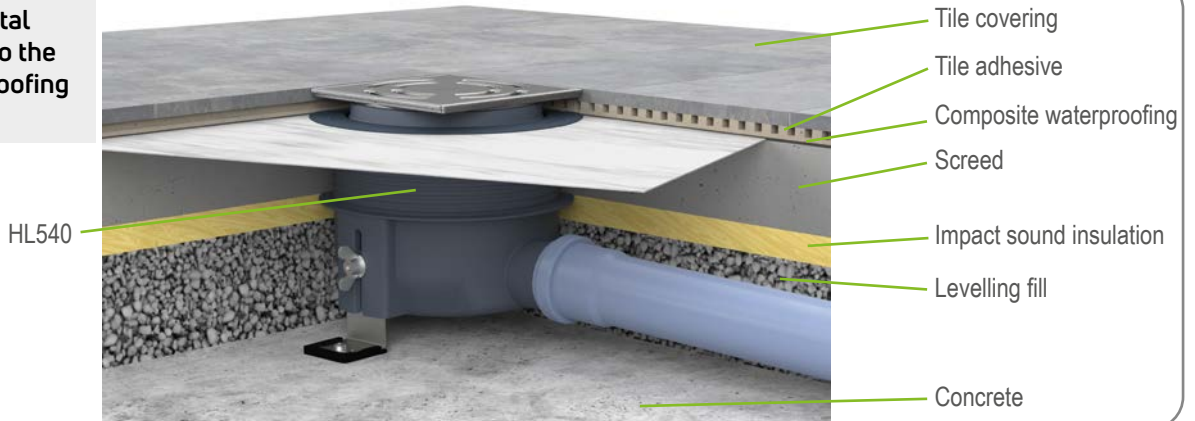
ÖNORM B2501 .....	Drainage of buildings
DIN 1986-100 .....	Drainage systems for buildings and estates
EN 12056.....	Gravity drainage systems inside of buildings
ÖNORM B2207 .....	Tiling works
EN1253.....	Drains for buildings

## Selection of the convenient drain

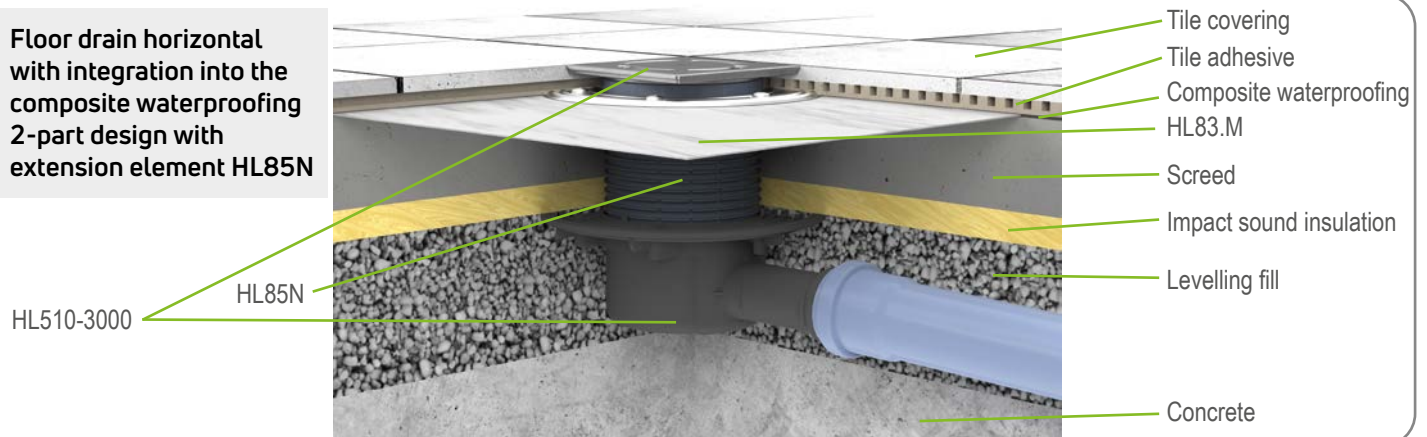
Selective criteria	Requirements	Product	
		horizontal outlet	vertical outlet
<b>Capacity</b>	To find the right choice, one has to know, which maximum wastewater quantity should be drained off.	up to 0,4 l/s → HL90PrblueD up to 0,45 l/s → HL90Prblue (-3000) up to 0,55 l/s → Series HL510, Series HL80.1, <b>HL541(I)</b> Series HL300, HL304 up to 0,8 l/s → HL540(I), HL5100Pr up to 1 l/s → HL5100 up to 1,12 l/s → Series HL70 up to 1,5 l/s → HL72.1(N)	up to 0,5 l/s → Series HL80, Series HL310Prblue up to 0,67 l/s → Series HL310 up to 0,8 l/s → HL3100Pr from 1,25 l/s up to 1,4 l/s → HL3100 up to 1,8 l/s → Series HL317
<b>Existing floor height</b>	<p>At drains with horizontal outlet the floor height is an important criteria.</p> <p>Floor construction concrete floor -  top edge of the screed  <math>\geq 70 \text{ mm} \leq 90 \text{ mm}</math>  <math>\geq 90 \text{ mm} \leq 110 \text{ mm}</math>  <math>\geq 90 \text{ mm} \leq 250 \text{ mm}</math>  <math>\geq 110 \text{ mm} \leq 160 \text{ mm}</math>  <math>\geq 160 \text{ mm} \leq 180 \text{ mm}</math>  <math>\geq 180 \text{ mm}</math></p> <p>At drains with vertical outlet the drain body lies on the concrete floor and therefore mostly needs an extension element with flange, to reach the top edge of the screed.</p>	<p>Height of the drain body:</p> <p>Series HL90, <b>HL541(i)</b> = 62 mm  Series HL510 = 79 mm,  Series HL540 = 80 mm  Series HL5100 = 97 mm  Series HL72.1 = 150 mm  Series HL70 = 173 mm</p>	<p>Series HL80, HL310 → HL85N  Series HL3100 → HL8500 Series  HL317 → HL350.1</p>
<b>Waterproofing</b>	<p>The use of a sealing kit, which fits to the on-site waterproofing, is absolutely necessary for a watertight connection.  Kind and material of the waterproofing:  For under-tile waterproofings, e.g.  2-component-epoxy resins</p> <p>For EPDM-sheetings, based on bitumen, for bitumen coatings and for welding of bitumen sheetings</p> <p>Welding of bitumen sheetings</p>	<p>Series HL70, HL80, HL90, HL300, HL310, HL510 → HL83.M  Series HL72.1 and HL317 → HL84.M  HL540 and <b>HL541</b> series → Waterproofing included!  Series HL3100 and HL5100 → HL8300.M</p> <p>Series HL70, HL80, HL90, HL300, HL310, HL510 → HL83  Series HL72.1 and HL317 → HL84  Series HL3100 and HL5100 → HL8300</p> <p>HL83H, HL8300.H  Series HL70.....→ HL83H  Instead of series HL72.1 or HL317 → HL72.1H and HL317H  Series HL3100 and HL5100 → HL8300H</p>	

## HL Floor drains – Sectional drawings

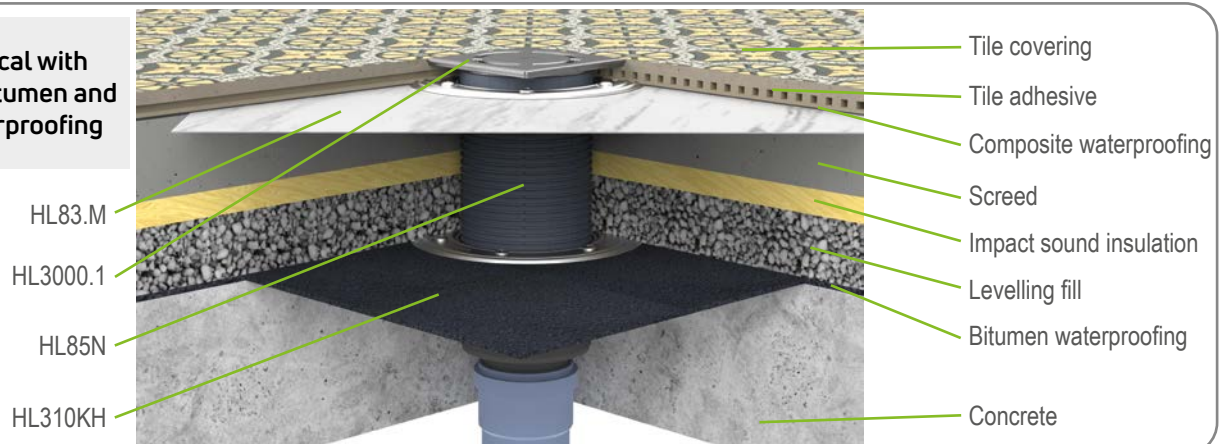
**Floor drain horizontal with integration into the composite waterproofing e.g. tiled shower**



**Floor drain horizontal with integration into the composite waterproofing 2-part design with extension element HL85N**



**Floor drain vertical with integration in bitumen and composite waterproofing**





## HL Floor drains – Installation



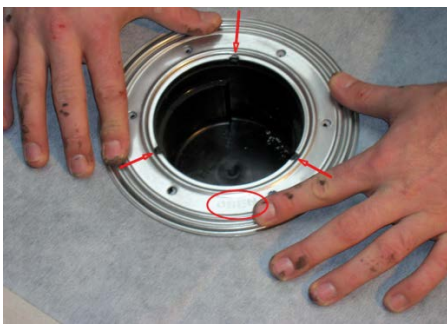
1. Fill in concrete and level to the height of the lid cover



2. Wait, until the concrete is set



3. Remove lid cover, clean flange and insert the gasket



4. Apply the waterproofing membrane



5. Fix the stainless steel ring by screwing



6. The sealing kit is below the concrete level



7. Apply the liquid waterproofing



8. Smooth the membrane



9. Apply the liquid waterproofing on the whole wet area.



10. The sealing kit is completely below the concrete level



11. Cut the extension



12. Insert the extension without O-ring. Lay the tiles.

## HL Floor drains – Products – Overview

### Drains



Product	HL90Prblue	HL90PrblueD	HL510(N)(Prblue)	HL80.1	HL80.1C	HL90Prblue-3020	HL300
Description	Drain horizontal DN40/50	Drain horizontal DN40, with fleece flange	Drain horizontal DN40/50	Drain 50/75 with convertible ball-joint outlet	Drain 50/75 with polymere concrete collar and convertible outlet	Drain horizontal DN40/50	Drain horizontal DN50 with side inlet
Function	Extremely flat, for flat floor constructions with <b>Primus blue</b> trap	Especially for under-tile waterproofings, with <b>Primus blue</b> trap	Standard drain, flat, also available with <b>Primus blue</b> trap	For horizontal and vertical connection	Especially for epoxy resin floor surfaces	Extreme flat with tilable grate and <b>Primus blue</b> trap	With side inlet, which cares for a full water trap. The integrated backwater protector prevents foam to leak through the grate.

### Extensions

Product data  
see chapter sealing  
kits / extensions

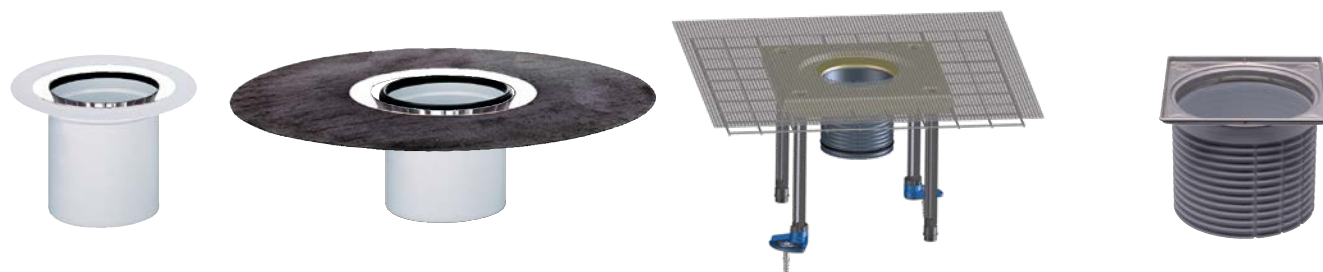


Product	HL340N	HL3400	HL350	HL85N	HL8500
Description	Extension	Extension	Extension	Extension with flange	Extension with flange
Function	For elongating the extension, fits to drains of series HL90, HL510, HL80, HL300, HL70, HL310, HL304	For elongating the extension, fits to drains of series HL3100 and HL5100	For elongating the extension, fits to drains of series HL72.1 and HL317	For the adjustment of the drain to the waterproofing level, fits to drains of series HL90, HL510, HL80, HL300, HL70, HL310, HL304	For the adjustment of the drain to the waterproofing level, fits to drains of series HL3100 and HL5100

## HL Floor drains – Products – Overview



HL510(N)(Prblue)-3020	HL5100(Pr)	HL310(N)(Prblue)-3020	HL72.1N	HL310(N)(Prblue)	HL3100(Pr)	HL317
Drain horizontal DN40/50	Floor drain horizontal DN50/75, high capacity	Drain vertikal DN50/75/110	Floor drain horizontal DN75/110, high capacity	Floor drain vertical DN50/75/110	Ablauf senkrecht DN50/75/110	Floor drain vertical DN50/75/110
Standard drain with tilable extension and optional <b>Primus blue</b> trap	For high capacity reasons, also available with Primus trap	With tilable grate and optional <b>Primus blue</b> trap	For high capacity reasons	For outlet pipes below the concrete floor, also available with <b>Primus blue</b> trap	For outlet pipes below the concrete floor, with high capacity, also available with <b>Primus blue</b> trap	For outlet pipes below the concrete floor, with high capacity.



HL350.1(0)	HL350.1H	HL85NC	HL3200
Extension with Sealing flange	Extension with bitumen flange	Extension with polymere concrete collar	Extension with stainless steel frame and grate
To adjust the drain to the waterproofing level, fitting to floor drain series HL72.1 and HL317	To adjust the drain to the level of under-tile waterproofings, fitting to floor drain series HL72.1 and HL317	For height adjustment of the drain to liquid waterproofings, fits to drain series HL90, HL510, HL80, HL300, HL70, HL310 and HL304	To change from standard extension to extension with stainless steel frame, e.g. when you use „design“-grates. Fitting to floor drain series HL90, HL510, HL80, HL300, HL70, HL310, HL304

## HL Floor drains – Products – Overview

### Accessories



Product	HL3020	HL37N	HL3000	HL37NP	HL38N	HL39G	HL3910	HL3911
Description	Tilable extension	Standard extension	Extension „Klick-Klack“	Extension with PVC-collar	Round extension	Cast iron extension	Extension „Klick-Klack“	Extension „Klick-Klack“ with screwable grate
Function	Extension fits to drain bodies HL70K-3020, HL80K-3020, HL90K-3020, HL300K-3020, HL304K-3020, HL310K-3020 and HL510K-3020	Standard extension, fitting to floor drain series HL90, HL510, HL80, HL300, HL70, HL310, HL304	Standard extension with stainless steel frame, fitting to floor drain series HL90, HL510, HL80, HL300, HL70, HL310, HL304	To connect PVC floor coverings, fitting to floor drain series HL90, HL510, HL80, HL300, HL70, HL310, HL304	Extension with round cover plate, fitting to floor drain series HL90, HL510, HL80, HL300, HL70, HL310, HL304	Usage with high load or to connect hot bitumen floor coverings, fitting to floor drain series HL90, HL510, HL80, HL300, HL70, HL310, HL304	Standard extension, fitting to floor drain series HL3100 and HL5100	Standard extension, fitting to floor drain series HL3100 and HL5100

### Sealing kits



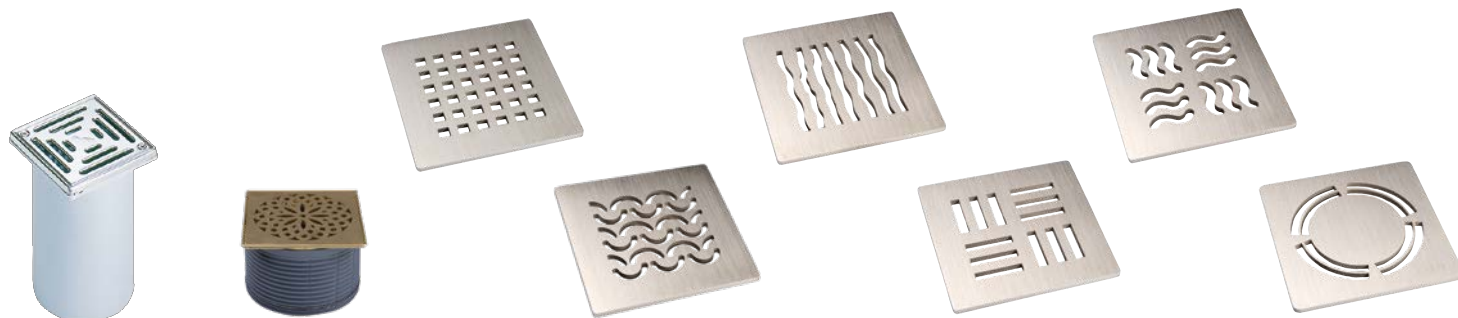
Product data  
see chapter sealing  
kits / extensions



Product	HL83.0	HL83	HL83.M	HL83.H	HL8300.0
Description	Sealing kit without sheeting	Sealing kit with EPDM sheeting	Sealing kit with textile coated membrane	Sealing kit with bitumen collar	Sealing kit without sheeting
Function	For clamping of on-site sheetings, fitting to floor drain series HL70, HL80, HL90, HL300, HL304, HL310, HL510	For bitumen coatings and EPDM sheetings, fitting to floor drain series HL70, HL80, HL90, HL300, HL304, HL310, HL510	For under-tile waterproofings, fitting to floor drain series HL70, HL80, HL90, HL300, HL304, HL310, HL510	For bitumen based waterproofings or coatings, fitting to floor drain series HL70, HL80, HL90, HL300, HL304, HL310, HL510	For clamping of on-site sheetings, fitting to floor drain series HL3100 and HL5100



## HL Floor drains – Products – Overview



HL66(Q)	HL3928	HL3120	HL3121	HL3123	HL3124	HL3125	HL3127
Extension	Extension with design-grate „Hamam“	Design-grate „Quadra“	Design-grate „Seine“	Design-grate „Orinoco“	Design-grate „Nil“	Design-grate „Yukon“	Design-grate „Primus Design“
Stainless steel grate with high request on design and stability, fitting to floor drain series HL72.1 and HL317	Extension for floor drain with golden frame and grate, design „Hamam“. Fits to floor drain series HL5100 and HL3100.	Stainless steel grate with high request on design and stability, fitting to floor drain series HL90, HL510, HL80, HL300, HL70, HL310, HL304	Stainless steel grate with high request on design and stability, fitting to floor drain series HL90, HL510, HL80, HL300, HL70, HL310, HL304	Stainless steel grate with high request on design and stability, fitting to floor drain series HL90, HL510, HL80, HL300, HL70, HL310, HL304	Stainless steel grate with high request on design and stability, fitting to floor drain series HL90, HL510, HL80, HL300, HL70, HL310, HL304	Stainless steel grate with high request on design and stability, fitting to floor drain series HL90, HL510, HL80, HL300, HL70, HL310, HL304	Stainless steel grate with high request on design and stability, fitting to floor drain series HL90, HL510, HL80, HL300, HL70, HL310, HL304



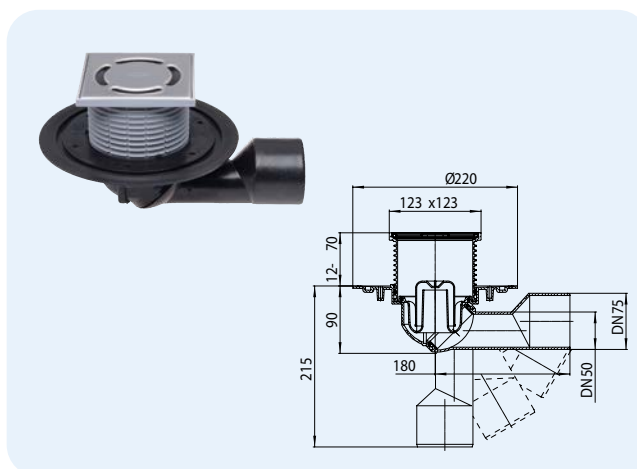
HL8300	HL8300.M	HL8300.H	HL84.0	HL84	HL84.M
Sealing kit with EPDM sheeting	Sealing kit with textile coated membrane	Sealing kit with bitumen collar	Sealing kit without sheeting	Sealing kit with EPDM sheeting	Sealing kit with textile coated membrane
For bitumen coatings and EPDM sheetings, fitting to floor drain series HL3100 and HL5100	For under-tile waterproofings, fitting to floor drain series HL3100 and HL5100	For bitumen based waterproofings or coatings, fitting to floor drain series HL3100 and HL5100	For clamping of on-site sheetings, fitting to floor drain series HL317 and HL72.1	For bitumen coatings and EPDM sheetings, fitting to floor drain series HL317 and HL72.1	For under-tile waterproofings, fitting to floor drain series HL317 and HL72.1

## HL Floor drains – Products – Data

### HL80.1 Floor drain with convertable outlet

#### Data

Capacity	0,5 l/s
Material	PP,PE, stainless steel V2A
Outlet	DN50/75 cuttable, stepless convertable from horizontal to vertical, outlet pluggable and weldable
Extension	123 x 123 mm, cuttable in height
Grate	Stainless steel grate 115 x 115 mm
Stench trap	Height of water trap 50 mm
Standard	EN 1253
Load classification	K 3 – max. 300 kg
Recommended for	Floor drainage inside the building
Additional information	temperature-resistant up to 85 °C
Including	Supporting frame, lot cover

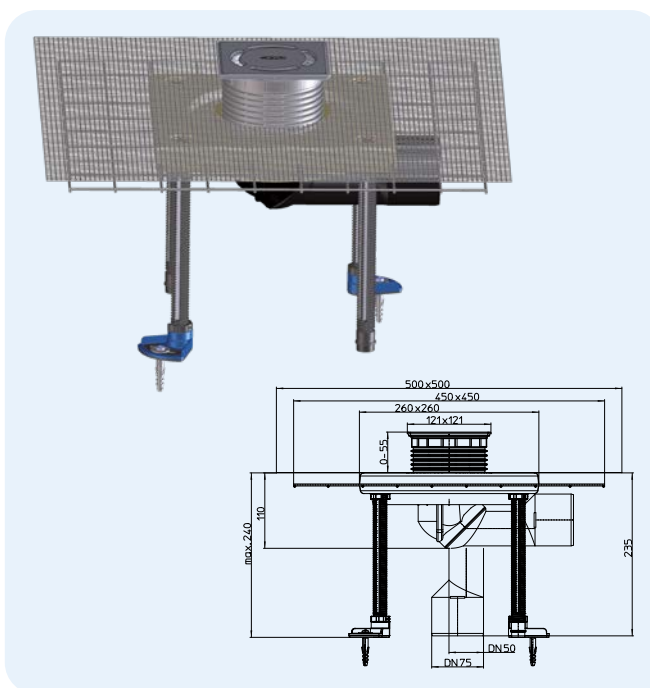


HL-No. 80.1	Dimension DN50/75	Weight 625 g	EAN +700813	Piece/package 1
----------------	----------------------	-----------------	----------------	--------------------

### HL80.1C Floor drain with polymere concrete collar

#### Data

Capacity	0,5 l/s
Material	PP,PE, polymere concrete collar, stainless steel V2A
Outlet	DN50/75 adjustable in length, convertable from horizontal to vertical, connector pluggable and weldable
Extension	123 x 123 mm, adjustable in length
Grate	Stainless steel grate 115 x 115 mm
Stench trap	Height of seal water 50 mm
Standard	EN 1253
Load classification	K 3 – max. 300 kg
Recommended for	Under-tile waterproofings and epoxy resin coatings
Additional information	temperature-resistant up to 85 °C
Including	Supporting frame, lot cover

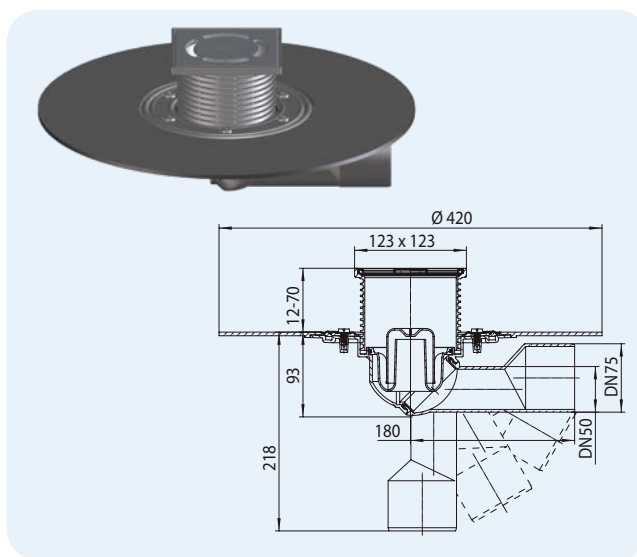


HL-No. 80.1C	Dimension DN50/75	Weight 6100 g	EAN +050802	Piece/package 1
-----------------	----------------------	------------------	----------------	--------------------

## HL80.1H Floor drain with bitumen collar

### Data

Capacity	0,5 l/s
Material	PP,PE, premounted bitumene membrane, stainless steel V2A
Outlet	DN50/75 adjustable in length, convertible from horizontal to vertical, connector pluggable and weldable
Extension	123 x 123 mm, cuttable in height
Grate	Stainless steel grate 115 x 115 mm
Stench trap	Height of seal water 50 mm
Standard	EN 1253
Load classification	K 3 – max. 300 kg
Recommended for	Bitumen waterproofings
Additional information	temperature-resistant up to 85 °C
Including	Supporting frame, lot cover

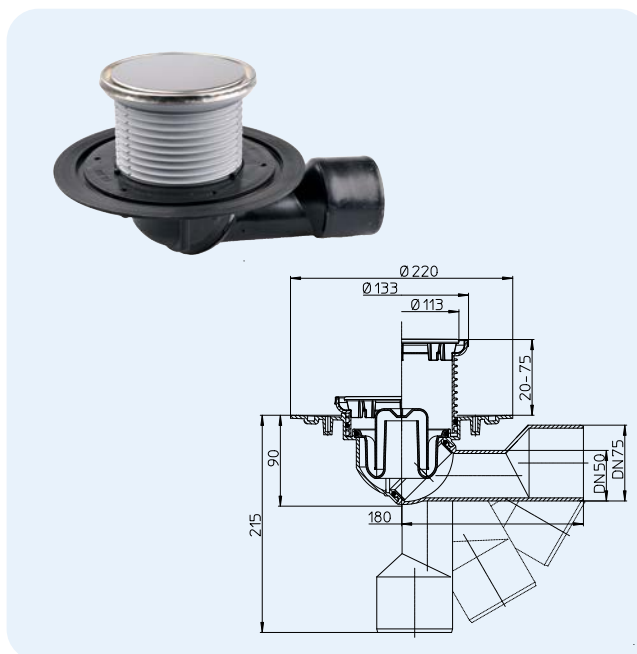


HL-No. 80.1H	Dimension DN50/75	Weight 1195 g	EAN +701810	Piece/package 1
-----------------	----------------------	------------------	----------------	--------------------

## HL80.1R Floor drain with round cover plate

### Data

Capacity	0,5 l/s
Material	PP,PE, stainless steel V2A
Outlet	DN50/75 adjustable in length, convertible from horizontal to vertical, connector pluggable and weldable
Extension	Stainless steel frame Ø 133 mm, cuttable in height
Grate	Stainless steel cover plate Ø 112 mm
Stench trap	Height of seal water 50 mm
Standard	EN 1253
Load classification	K 3 – max. 300 kg
Recommended for	Barrier-free showers with round cover plate
Additional information	temperature-resistant up to 85 °C
Including	Supporting frame, lot cover

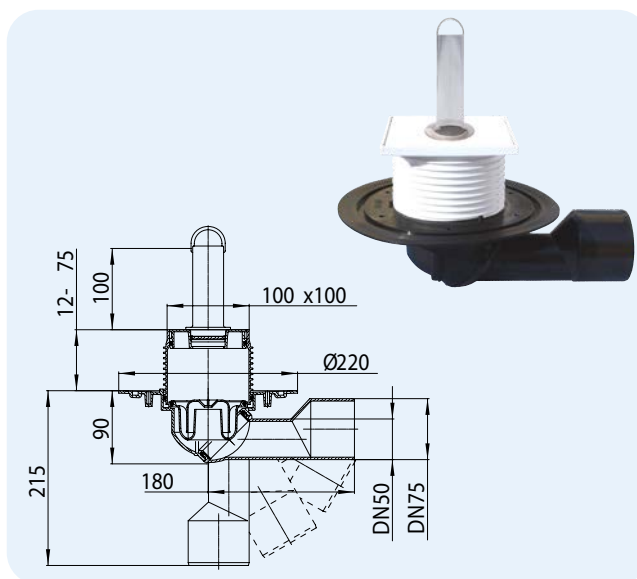


HL-No. 80.1R	Dimension DN50/75	Weight 650 g	EAN +004591	Piece/package 1
-----------------	----------------------	-----------------	----------------	--------------------

## HL80.2 Floor drain with standpipe

### Data

Capacity	0,5 l/s
Material	PP, PE
Outlet	DN50/75 adjustable in length, convertible from horizontal to vertical, connector pluggable and weldable
Extension	100 x 100 mm, cuttable in height
Grate	94 x 94 mm cover
Stench trap	Height of seal water 30 mm
Standard	EN 1253
Load classification	K 3 – max. 300 kg
Recommended for	Brick-built bathtubs, longer standpipe on request!
Additional information	temperature-resistant up to 85 °C
Including	Lot cover, standpipe HL515 with 10 cm



HL-No.  
80.2

Dimension  
DN50/75

Weight  
535 g

EAN  
+700820

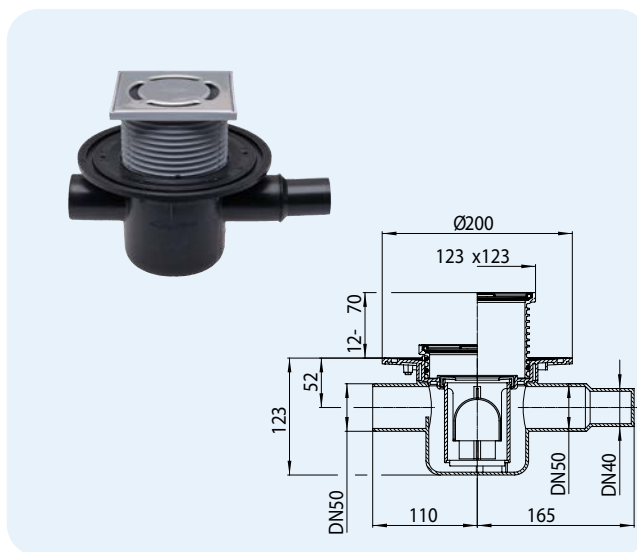
Piece/package  
1



## HL300 Floor drain with side inlet and backwater protector

### Data

Capacity	0,5 l/s
Material	PE, stainless steel V2A
Outlet	horizontal DN50, side inlet DN40/50, Connections pluggable and weldable
Extension	123 x 123 mm, cuttable in height
Grate	Stainless steel grate 115 x 115 mm
Stench trap	Height of seal water 50 mm
Standard	EN 1253
Load classification	K 3 – max. 300 kg
Recommended for	Central siphoning with side inlet, which cares for water in the trap
Additional information	with backwater protector, temperature-resistant up to 85 °C
Including	Supporting frame, lot cover



HL-No.  
300

Dimension  
DN50

Weight  
935 g

EAN  
+703005

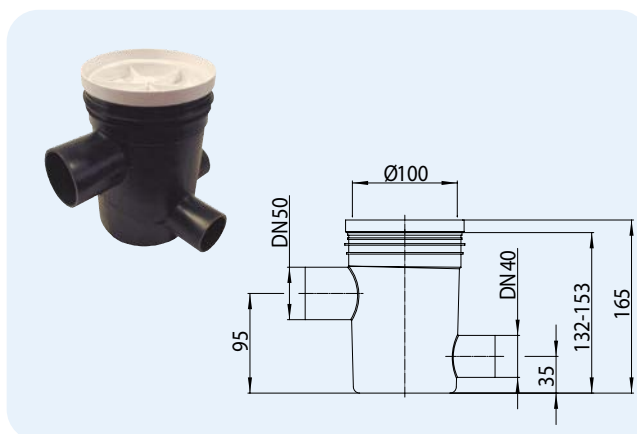
Piece/package  
1



## HL303K Floor drain body with 3 side inlets

### Data

Capacity	0,5 l/s
Material	PE
Outlet	horizontal DN50, 3 side inlets, connections pluggable and weldable
Grate	with Accessories: Plug HL306 or with Trap seal assembly HL307
Stench trap	Height of seal water 35 mm
Recommended for	Central drainage and siphoning for the whole bathroom
Additional information	no connection to the waterproofing
Including	Lot cover



HL-No.  
303K

Dimension  
DN50

Weight  
230 g

EAN  
+703036

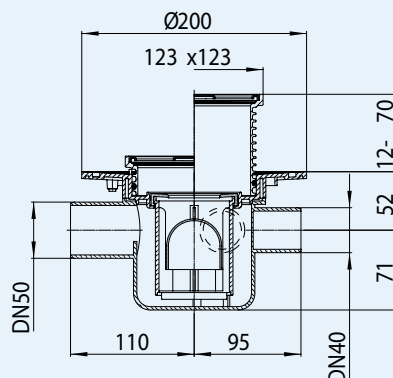
Piece/package  
1



## HL304 Floor drain with 3 side inlets

### Data

Capacity	0,5 l/s
Material	PE, stainless steel V2A
Outlet	horizontal DN50, 3 side inlets DN40, connections pluggable and weldable
Extension	123 x 123 mm, cuttable in height
Grate	Stainless steel grate 115 x 115 mm
Stench trap	Height of seal water 50 mm
Standard	EN 1253
Load classification	K 3 – max. 300 kg
Recommended for	Central drainage and siphoning of the whole bathroom, the inlets care for enough water in the trap
Additional information	with backwater protector, temperature-resistant up to 85 °C
Including	Supporting frame, lot cover



HL-No.  
304

Dimension  
DN50

Weight  
795 g

EAN  
+703043


Piece/package  
1

 HL037Pr.1E

 HL037N.0E

 HL037N.2E

 HL01067D

 HL0300.0EN

 HL0300.6E

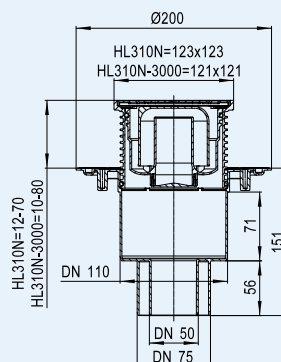
 HL304K

## HL310N Floor drain

### HL310N-3000 Floor drain like HL310N, but with stainless steel frame

### Data

Capacity	0,75 l/s with 20 mm stowage height 0,55 l/s with 10 mm stowage height
Material	PP, stainless steel V2A
Outlet	DN50/75/110, vertical
Extension	HL310N: 123 x 123 mm, cuttable in height HL310N-3000: 121 x 121 mm, „Klick-Klack-fixing system“, cuttable in height
Grate	Stainless steel grate 115 x 115 mm
Stench trap	Height of seal water 50 mm
Standard	EN 1253
Load classification	K 3 – max. 300 kg
Recommended for	Floor drainage with vertical connection
Additional information	temperature-resistant up to 85 °C
Including	Supporting frame, lot cover



HL-No.  
310N  
310N-3000

Dimension  
DN50/75/110  
DN50/75/110

Weight  
620 g  
665 g

EAN  
+004638  
+016327

Piece/package  
1  
1

### HL310N HL310N-3000

 HL037Pr.1E  
 HL037N.0E

 HL0510.7E  
 HL0510.7EKK

 HL037N.2E  
 HL3200

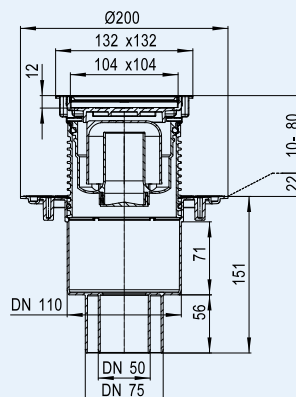
 HL01067D

 HL0300.0EN  
 HL310K

**HL310N-3020 Floor drain with tilable extension**  
**HL310Prblue-3020** like HL310N-3020, but with Primus **blue** trap

**Data**

Capacity	HL310N-3020 0,75 l/s with 20 mm stowage height 0,70 l/s with 10 mm stowage height HL310Prblue-3020 0,60 l/s with 20 mm stowage height 0,50 l/s with 10 mm stowage height
Material	PP,ABS, stainless steel V4A
Outlet	DN50/75/110, vertical
Extension	132 x 132 mm with stainless steel frame V4A, cuttable in height
Grate	Stainless steel frame and special grate, to be filled with tiles Size of grate: 104 x 104 x 12 mm
Stench trap	HL310N-3020: Height of seal water 50mm HL310Prblue-3020: Primus <b>blue</b> trap with 50mm seal water
Standard	EN 1253, ÖNORM B2501
Load classification	K 3 - max. 300 kg
Recommended for	e.g. tiled showers, SPA-area
Additional information	Temperature-resistant up to 85 °C
Including	Lot cover



**HL310N- 3020** **HL310Prblue- 3020**



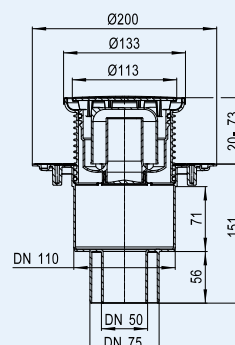
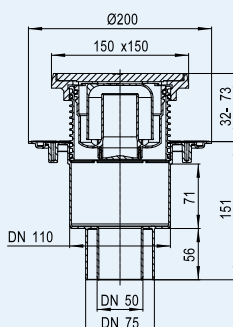
**HL310K-3020**

HL-No.	Dimension	Weight	EAN	Piece/package
310N-3020	DN50/75/110	670 g	+034383	1
310Prblue-3020	DN50/75/110	727 g	+052011	1

**HL310NG Floor drain with cast iron frame and grate**  
**HL310NR** Floor drain like HL310NG, but with round cover plate

**Data**

Capacity	HL310NG DN50: 0,85 l/s with 20 mm stowage height DN75 + DN110 0,75 l/s with 20 mm stowage height HL310NR 0,75 l/s with 20 mm stowage height 0,55 l/s with 10 mm stowage height
Material	cast iron/PP, stainless steel V2A
Outlet	DN50/75/110, vertical
Extension	HL310NG: 150 x 150 mm, cuttable in height HL310NR: Ø 133 mm, cuttable in height
Grate	HL310NG: 137 x 137 mm, Cast iron HL310NR: Ø 112 mm, Stainless steel
Stench trap	Height of seal water 50 mm
Standard	EN 1253
Load classification	HL310NG: L15 – max. 1,5 t HL310NR: K 3 – max. 300 kg
Recommended for	HL310NG: e.g. car parks, mastic asphalt HL310NR: barrier-free showers
Additional information	temperature-resistant up to 85 °C
Including	Lot cover



**HL310NG** **HL310NR**



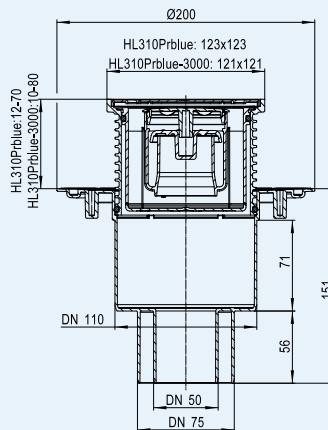
**HL310K**

HL-No.	Dimension	Weight	EAN	Piece/package
310NG	DN50/75/110	2295 g	+004652	1
310NR	DN50/75/110	560 g	+006038	1

**HL310Prblue** Floor drain with Primus **blue** trap  
**HL310Prblue-3000** like HL310Prblue, but with stainless steel frame

**Data**

Capacity	0,60 l/s with 20 mm stowage height 0,50 l/s with 10 mm stowage height
Material	PP
Outlet	DN50/75/110, vertical
Extension	HL310Prblue: 123 x 123 mm, cuttable in height HL310Prblue-3000: 121 x 121 mm, „Klick-Klack-fixing system“, cuttable in height
Grate	Stainless steel grate 115 x 115 mm
Stench trap	Height of seal water 50 mm and <b>Primus blue</b> (No stench, with or without water)
Standard	EN 1253, ÖNORM B2501
Load classification	K 3 – max. 300 kg
Recommended for	Floor drainage with vertical connection
Additional information	Floor drainage especially at unfrequent use, no stench with or without water, refilling of water into the trap is no longer necessary! Temperature resistant up to 85 °C
Including	Supporting frame, lot cover



HL-No.	Dimension	Weight	EAN
310Prblue	DN50/75/110	659 g	+051991
310Prblue-3000	DN50/75/110	722 g	+052004

**HL310Prblue**  
**HL310Prblue-3000**



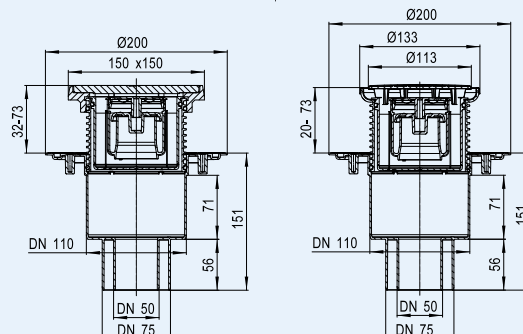
**HL310K**

Piece/package
1
1

**HL310PrblueG** Floor drain like HL310NG, but with Primus **blue** trap  
**HL310PrblueR** Floor drain like HL310NR, but with Primus **blue** trap

**Data**

Capacity	HL310PrblueG 0,55 l/s with 20 mm stowage height HL310PrblueR 0,60 l/s with 20 mm stowage height 0,50 l/s with 10 mm stowage height
Material	cast iron/PP, stainless steel V2A
Outlet	DN50/75/110, vertical
Extension	HL310PrblueG: 150 x 150 mm, cuttable in height HL310PrblueR: Ø 133 mm, cuttable in height
Grate	HL310PrblueG: 137 x 137 mm, Cast iron HL310PrblueR: Ø 112 mm, Stainless steel
Stench trap	Height of seal water 50 mm u. <b>Primus blue</b> (No stench, with or without water)
Standard	EN 1253, ÖNORM B2501
Load classification	HL310PrblueG: L15 – max. 1,5 t HL310PrblueR: K 3 – max. 300 kg
Recommended for	HL310PrblueG: e.g. car parks, mastic asphalt HL310PrblueR: barrier-free showers
Additional information	Floor drainage especially at unfrequent use, no stench with or without water, refilling of water into the trap is no longer necessary! Temperature resistant up to 85° C
Including	Lot cover



HL-No.	Dimension	Weight	EAN
310PrblueG	DN50/75/110	2324 g	+052073
310PrblueR	DN50/75/110	549 g	+052080

**HL310PrblueG**  
**HL310PrblueR**



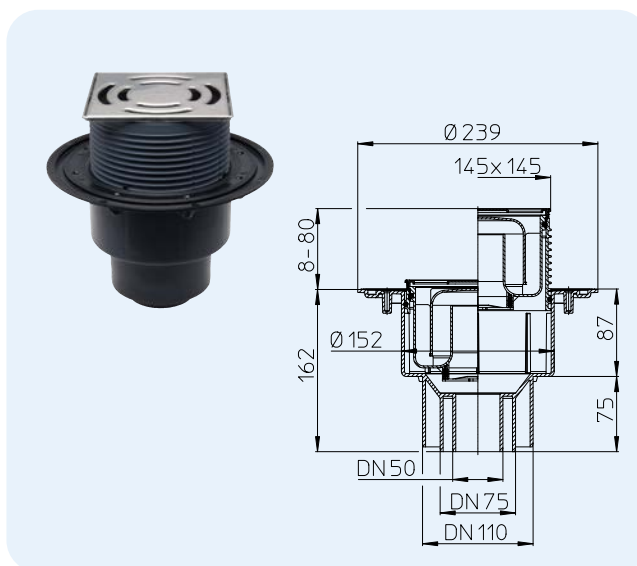
**HL310K**

Piece/package
1
1

## HL3100 Floor drain with high capacity

### Data

Capacity	DN50: 1,25 l/s, DN75/110: 1,4 l/s
Material	PE, stainless steel
Outlet	DN50/75/110, vertical, pluggable and weldable
Extension	Stainless steel V4A, 145 x 145 mm, „Klick-Klack“-locking system, cuttable in height
Grate	Stainless steel V2A, 138 x 138 mm
Stench trap	Height of seal water 50 mm
Standard	EN 1253
Load classification	K 3 – max. 300 kg
Recommended for	Floor drain with high capacity, e.g. „Raindance“
Additional information	with „Klick-Klack-fixing system“, temperature-resistant up to 85 °C
Including	Supporting frame, lot cover

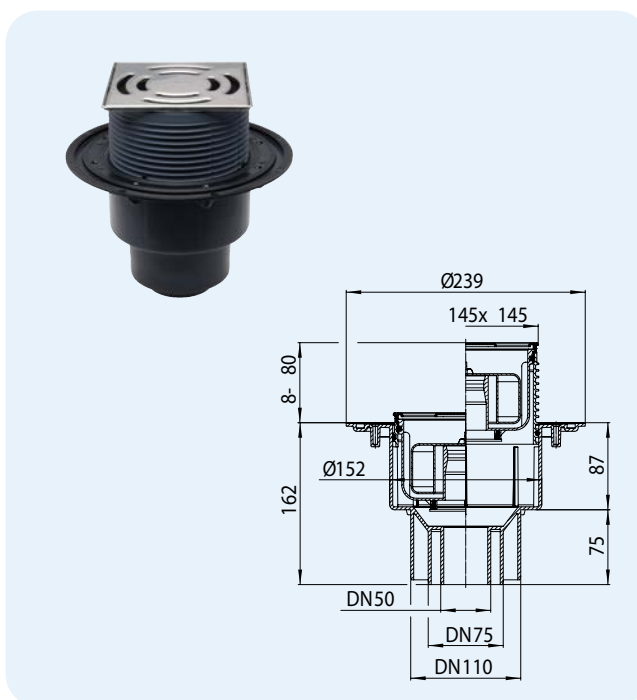


HL-No. 3100	Dimension DN50/75/110	Weight 1040 g	EAN +025428	Piece/package 1
----------------	--------------------------	------------------	----------------	--------------------

## HL3100Pr Floor drain with high capacity and Primus trap

### Data

Capacity	0,8 l/s
Material	PE, stainless steel
Outlet	DN50/75/110, vertical, pluggable and weldable
Extension	Stainless steel V4A, 145 x 145 mm, „Klick-Klack“-locking system, cuttable in height
Grate	Stainless steel V2A, 138 x 138 mm
Stench trap	Height of seal water 50 mm and Primus (No stench, with or without water)
Standard	EN 1253, ÖNORM B2501
Load classification	K 3 – max. 300 kg
Recommended for	Floor drain with high capacity, e.g. „Raindance“
Additional information	Floor drainage especially at unfrequent use, no stench with or without water, refilling of water into the trap is no longer necessary! Temperature resistant up to 85 °C
Including	Supporting frame, lot cover



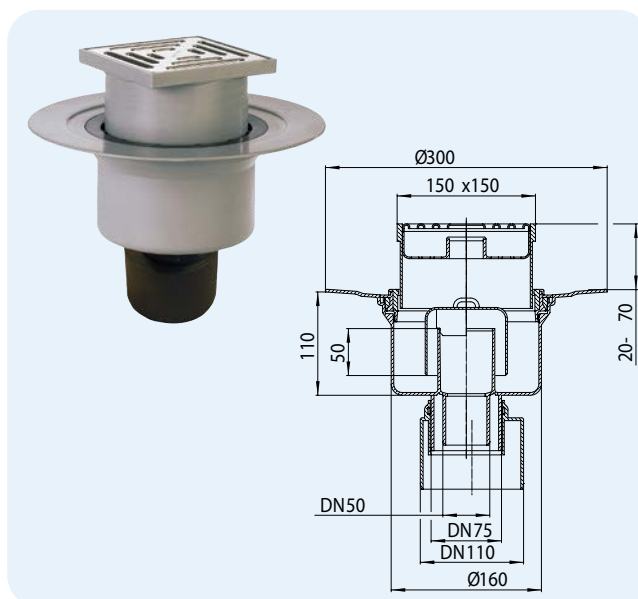
HL-No. 3100Pr	Dimension DN50/75/110	Weight 1079 g	EAN +025435	Piece/package 1
------------------	--------------------------	------------------	----------------	--------------------



## HL317 Floor drain vertical

### Data

Capacity	1,8 l/s
Material	PP, stainless steel V2A
Outlet	DN50/75/110, vertical
Extension	150 x 150 mm, cuttable in height
Grate	Stainless steel grate 138 x 138 mm
Stench trap	Height of seal water 50 mm
Standard	EN 1253
Load classification	K 3 – max. 300 kg
Recommended for	Floor drain with high capacity
Additional information	temperature-resistant up to 95 °C
Including	Lot cover

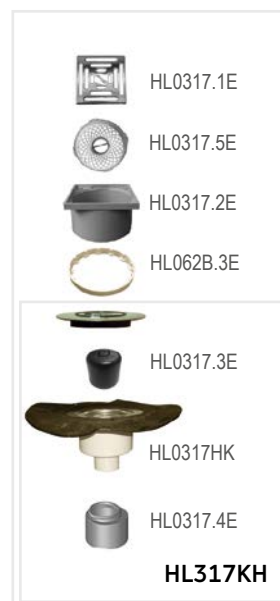
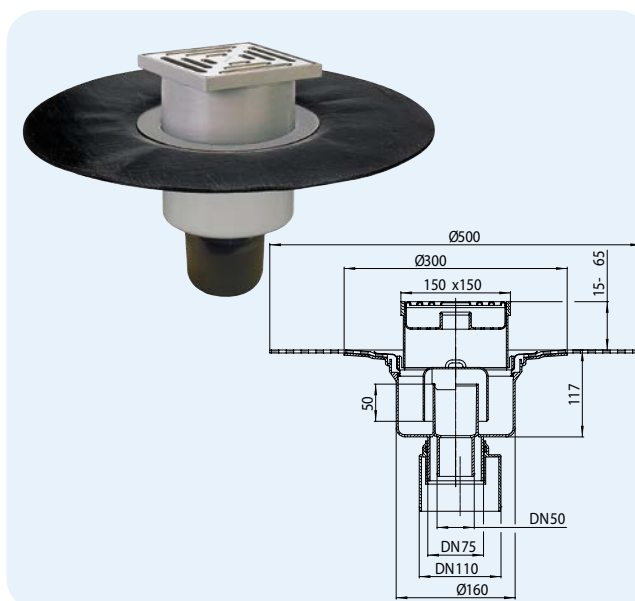


HL-No. 317	Dimension DN50/75/110	Weight 1200 g	EAN +703173	Piece/package 1
---------------	--------------------------	------------------	----------------	--------------------

## HL317H Floor drain vertical with bitumen collar

### Data

Capacity	1,8 l/s
Material	PP, stainless steel V2A
Outlet	DN50/75/110 vertical
Extension	150 x 150 mm, cuttable in height
Grate	Stainless steel grate 138 x 138 mm
Stench trap	Height of seal water 50 mm
Standard	EN 1253
Load classification	K 3 – max. 300 kg
Recommended for	Floor drain with high capacity
Additional information	Bitumen waterproofings, temperature-resistant up to 95 °C
Including	Lot cover



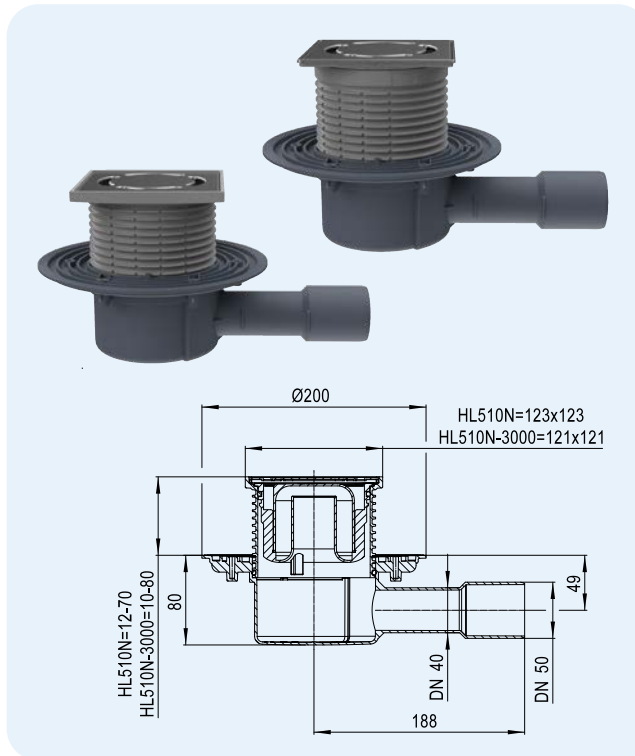
HL-No. 317H	Dimension DN50/75/110	Weight 1985 g	EAN +317110	Piece/package 1
----------------	--------------------------	------------------	----------------	--------------------

## HL510N Floor drain

### HL510N-3000 Floor drain like HL510N, but with stainless steel frame

#### Data

Capacity	0,55 l/s with 20 mm stowage height 0,45 l/s with 10 mm stowage height
Material	PP, stainless steel
Outlet	DN40/50, horizontal
Extension	HL510N: 123 x 123 mm, cuttable in height HL510N-3000: 121 x 121 mm, „Klick-Klack-fixing system”, cuttable in height, stainless steel V4A
Grate	Stainless steel grate 115 x 115 mm, stainless steel V2A
Stench trap	Height of seal water 50 mm
Standard	EN 1253
Load classification	K 3 – max. 300 kg
Recommended for	Floor drainage with horizontal connection
Additional information	Sound protection acc. ÖNORM B8115-2 is reached together with HL6200 sound insulation pad (see chapter accessories). Temperature- resistant up to 85 °C
Including	Supporting frame, lot cover



HL-No.	Dimension	Weight	EAN
510N	DN40/50	546 g	+051007
510N-3000	DN40/50	681 g	+016686

#### HL510N

#### HL510N-3000

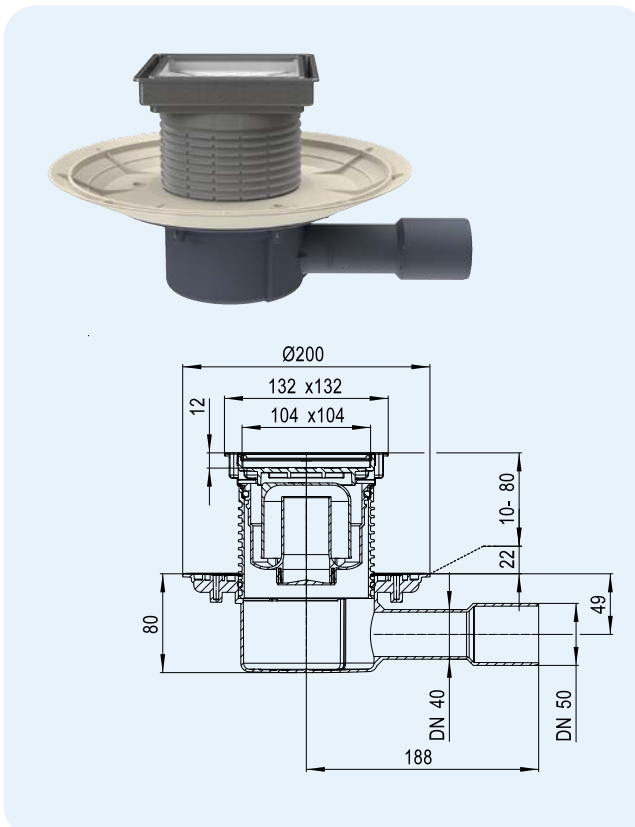


## HL510N-3020 Floor drain with frame for tiles

### HL510Prblue-3020 Like HL510N-3020, but with Primus blue trap

#### Data

Capacity	HL510N-3020: 0,55 l/s with 20 mm stowage height 0,45 l/s with 10 mm stowage height HL510Prblue-3020: 0,55 l/s with 20 mm stowage height 0,45 l/s with 10 mm stowage height
Material	PP, ABS, stainless steel V4A
Outlet	DN40/50 horizontal
Extension	132 x 132 mm with stainless steel frame V4A, cuttable in height
Grate	Stainless steel frame and special grate, to be filled with tiles Size of grate: 104 x 104 x 12 mm
Stench trap	HL510N-3020: Height of seal water 50 mm HL510Prblue-3020: Primus <b>blue</b> trap with 50mm seal water
Standard	EN 1253, ÖNORM B2501
Load classification	K 3 - max. 300 kg
Recommended for	e.g. tiled showers, SPA-area
Additional information	Sound protection acc. ÖNORM B8115-2 is reached together with HL6200 sound insulation pad (see chapter accessories) Temperature- resistant up to 85 °C
Including	Lot cover



HL-No.	Dimension	Weight	EAN
510N-3020	DN40/50	686 g	+034406
510Prblue-3020	DN40/50	738 g	+052110

#### HL510N-3020

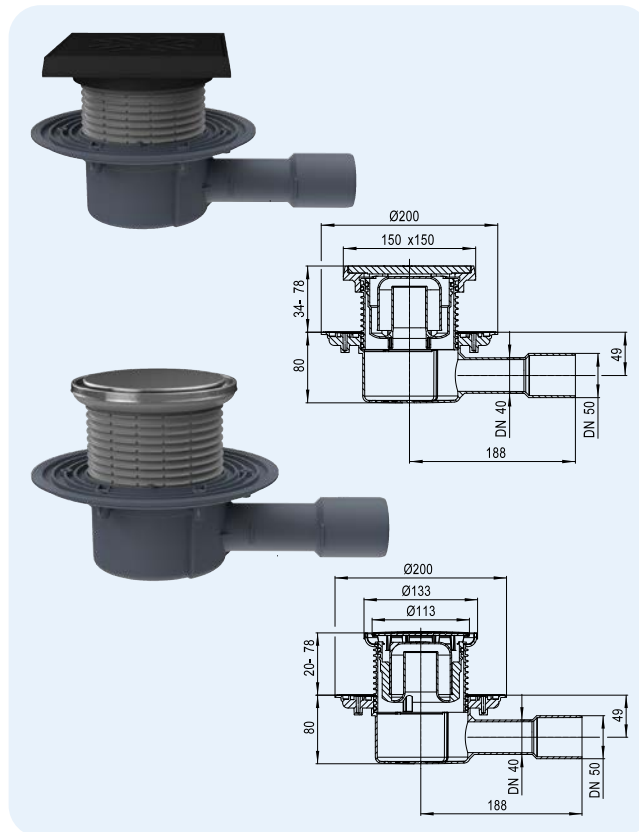
#### HL510Prblue-3020



**HL510NG** Floor drain with cast iron frame and grate  
**HL510NR** like HL510NG, but with round stainless steel cover plate

**Data**

Capacity	HL510NG 0,60 l/s with 20 mm stowage height HL510NR 0,55 l/s with 20 mm stowage height 0,45 l/s with 10 mm stowage height
Material	cast iron/PP, stainless steel V2A
Outlet	DN40/50, horizontal
Extension	HL510NG: 150 x 150 mm, cuttable in height HL510NR: Ø 133 mm, cuttable in height
Grate	HL510NG: 137 x 137 mm, Cast ironrost HL510NR: Ø 112 mm Edelstahl
Stench trap	Height of seal water 50 mm
Standard	EN 1253
Load classification	HL510NG: L15 – max. 1,5 t HL510NR: K 3 – max. 300 kg
Recommended for	HL510NG: e.g. carpark, mastic asphalt HL510NR: barrier-free showers
Additional information	Temperature-resistant up to 85 °C
Including	Lot cover



HL-No.	Dimension	Weight	EAN	Piece/package
510NG	DN40/50	2221 g	+001965	1
510NR	DN40/50	546 g	+006076	1

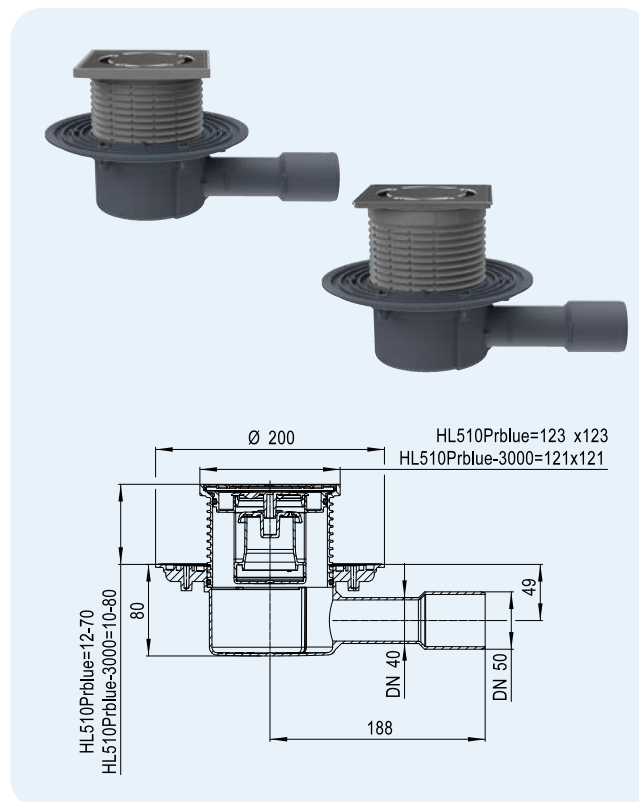
**HL510NG** **HL510NR**



**HL510Prblue** Floor drain with Primus **blue** trap  
**HL510Prblue-3000** like HL510Prblue, but with stainless steel frame

**Data**

Capacity	0,50 l/s with 20 mm stowage height 0,40 l/s with 10 mm stowage height
Material	PP, stainless steel
Outlet	DN40/50, horizontal
Extension	HL510Prblue: 123 x 123 mm, cuttable in height HL510Prblue-3000: 121 x 121 mm, „Klick-Klack-fixing system“, cuttable in height, stainless steel V4A
Grate	Stainless steel grate 115 x 115 mm, stainless steel V2A
Stench trap	Height of seal water 50 mm and <b>Primus blue</b> (No stench, with or without water)
Standard	EN 1253, ÖNORM B2501
Load classification	K 3 – max. 300 kg
Recommended for	Floor drainage with horizontal connection
Additional information	Floor drainage especially at unfrequent use, no stench with or without water, refilling of water into the trap is no longer necessary! Sound protection acc. ÖNORM B8115-2 is reached together with HL6200 sound insulation pad (see chapter accessories). Temperature- resistant up to 85 °C
Including	Supporting frame, lot cover



HL-No.	Dimension	Weight	EAN	Piece/package
510Prblue	DN40/50	675 g	+052097	1
510Prblue-3000	DN40/50	732 g	+052103	1

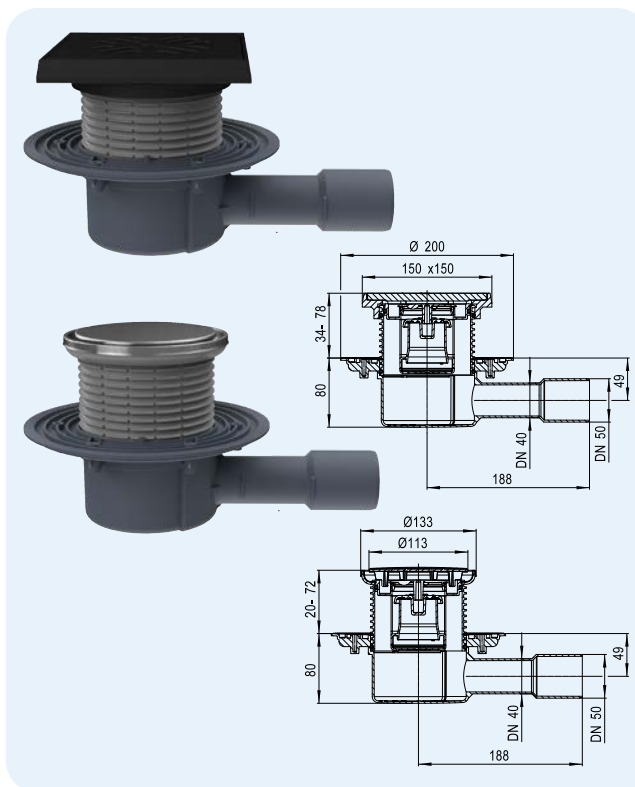
**HL510Prblue**  
**HL510Prblue-3000**



**HL510PrblueG** Floor drain with Primus **blue** odor barrier, cast frame and grate  
**HL510PrblueR** like HL510PrblueG, but with round stainless steel cover

**Data**

Capacity	HL510PrblueG 0,55 l/s with 20 mm stowage height HL510PrblueR 0,50 l/s with 20 mm stowage height 0,40 l/s with 10 mm stowage height
Material	cast iron/PP, stainless steel V2A
Outlet	DN40/50, horizontal, pluggable and weldable
Extension	HL510PrblueG: 150 x 150 mm, cuttable in height HL510PrblueR: Ø 133 mm, cuttable in height
Grate	HL510PrblueG: 137 x 137 mm, cuttable in height HL510PrblueR: Ø 112 mm, cuttable in height
Stench trap	Height of seal water 50 mm and <b>Primus blue</b> (No stench, with or without water)
Standard	EN 1253, ÖNORM B2501
Load classification	HL510PrblueG: L15 – max. 1,5 t HL510PrblueR: K 3 – max. 300 kg
Recommended for	HL510PrblueG: e.g. carparks, mastic asphalt HL510PrblueR: barrier-free showers
Additional information	Floor drainage especially at unfrequent use, no stench with or without water, refilling of water into the trap is no longer necessary! Sound protection acc. ÖNORM B8115-2 is reached together with HL6200 sound insulation pad (see chapter accessories). Temperature-resistant up to 85 °C
Including	Lot cover



HL-No.	Dimension	Weight	EAN	Piece/package
510PrblueG	DN40/50	2425 g	+052172	1
510PrblueR	DN40/50	675 g	+052189	1

**HL510PrblueG**  
**HL510PrblueR**

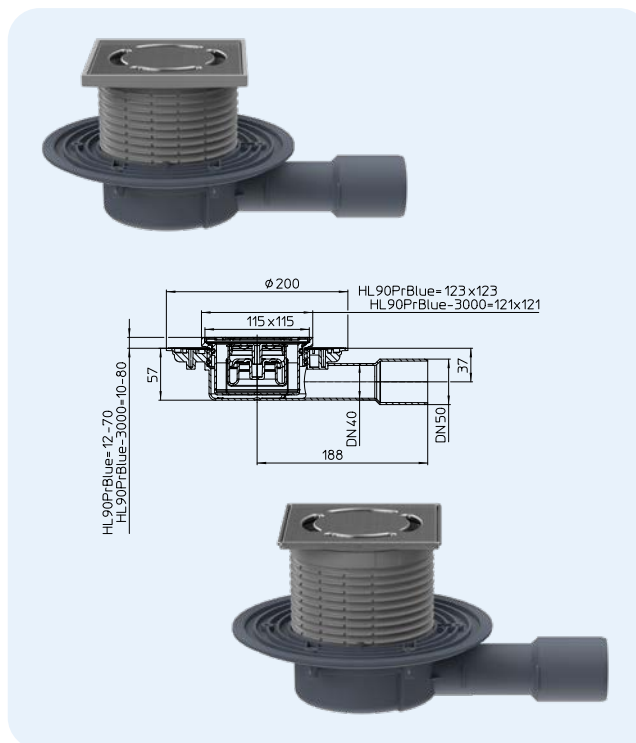


**HL510K**

**HL90Prblue** Floor drain flat with Primus **blue** trap  
**HL90Prblue-3000** like HL90Prblue, but with stainless steel frame

**Data**

Capacity	0,45 l/s with 20 mm stowage height 0,4 l/s with 10 mm stowage height
Material	PP, stainless steel V2A
Outlet	DN40/50, horizontal, pluggable and weldable
Extension	HL90Prblue: 123 x 123 mm, cuttable in height HL90Prblue-3000: 121 x 121 mm, „Klick-Klack-fixing system“, cuttable in height, stainless steel V4A
Grate	Stainless steel grate 115 x 115 mm, stainless steel V2A
Odor trap	New <b>Primus blue</b> , combined odor trap with sealing water and mechanical odor barrier (absolutely odor-tight even without water). Backflow-proof up to 50 cm accumulation height
Standard	EN 1253, ÖNORM B2501
Load classification	K 3 – max. 300 kg
Recommended for	Floor constructions < 100 mm
Additional information	Floor drainage especially at unfrequent use, no stench with or without water, refilling of water into the trap is no longer necessary! Sound protection acc. ÖNORM B8115-2 is reached together with HL6200 sound insulation pad (see chapter accessories). Hair catcher HL0541.6E available as accessories! Temperature-resistant up to 85 °C
Including	Supporting frame, lot cover



HL-No.	Dimension	Weight	EAN	Piece/package
90Prblue	DN40/50	510 g	+050505	1
90Prblue-3000	DN40/50	564 g	+050512	1

**HL90Prblue**  
**HL90Prblue-3000**



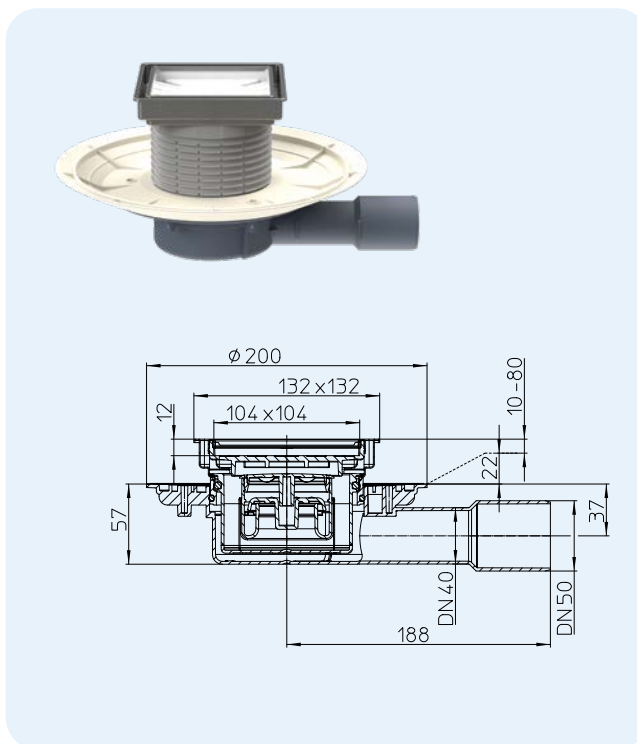
**HL90K**



## HL90Prblue-3020 Floor drain with tilable extension and PRIMUS trap

### Data

Capacity	0,5 l/s with 20 mm stowage height 0,45 l/s with 10 mm stowage height
Material	PP, ABS, stainless steel V4A
Outlet	DN40/50
Extension	132 x 132 mm with stainless steel frame V4A, cuttable in height
Grate	Stainless steel frame and special grate, to be filled with tiles Size of grate: 104 x 104 x 12 mm
Odor trap	New <b>Primus blue</b> , combined odor trap with sealing water and mechanical odor barrier (absolutely odor-tight even without water). Backflow-proof up to 50 cm accumulation height
Standard	EN 1253, ÖNORM B2501
Load classification	K 3 - max. 300 kg
Recommended for	e.g. tiled showers, SPA-area, with floor levels < 100mm
Additional information	Sound protection acc. ÖNORM B8115-2 is reached together with HL6200 sound insulation pad (see chapter accessories) Hair catcher HL0541.6E available as accessories! Temperature-resistant up to 85 °C
Including	Lot cover



HL-No.  
90Prblue-3020

Dimension  
DN40/50

Weight  
570 g

EAN  
+050529

Piece/package  
1



HL03020.1E



HL090.5EKK



HL03020.2E



HL01067D



HL03020.0E

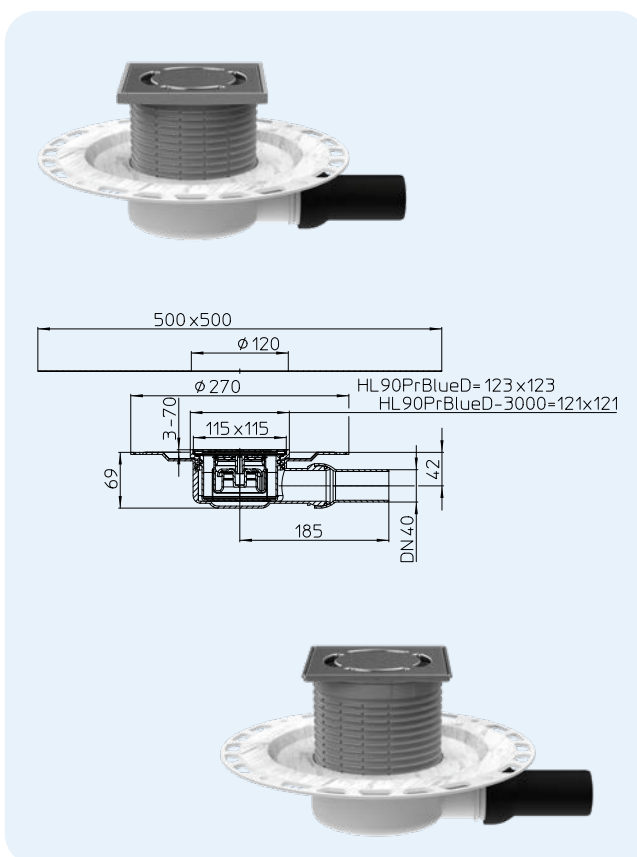


HL90K-3020

## HL90PrblueD Floor drain with integrated fleece flange HL90PrblueD-3000 like HL90PrblueD, but with stainless steel frame

### Data

Capacity	0,45 l/s with 20 mm stowage height 0,40 l/s with 10 mm stowage height
Material	PP/PE, stainless steel
Outlet	DN40, horizontal, pluggable and weldable
Extension	HL90PrblueD: 123 x 123 mm, cuttable in height HL90PrblueD-3000: 121 x 121 mm, „Klick-Klack-fixing system“, cuttable in height, stainless steel V4A
Grate	Stainless steel grate 115 x 115 mm, stainless steel V2A
Odor trap	New <b>Primus blue</b> , combined odor trap with sealing water and mechanical odor barrier (absolutely odor-tight even without water). Backflow-proof up to 50 cm accumulation height
Standard	EN 1253, ÖNORM B2501
Load classification	K 3 – max. 300 kg
Recommended for	Floor constructions < 100 mm
Additional information	Floor drainage especially at unfrequent use, no stench with or without water, refilling of water into the trap is no longer necessary! Sound protection acc. ÖNORM B8115-2 is reached together with HL6200 sound insulation pad (see chapter accessories). Hair catcher HL0541.6E available as accessories! Temperature-resistant up to 85 °C
Including	Supporting frame, lot cover



HL-No.  
90PrblueD  
90PrblueD-3000

Dimension  
DN40  
DN40

Weight  
812 g  
855 g

EAN  
+050543  
+050550

Piece/package

1  
1

### HL90PrblueD HL90PrblueD-3000



HL037Pr.1E



HL037N.0E



HL090.5E



HL090.5EKK



HL037N.2E



HL3200



HL090PrD.4E



HL90KD

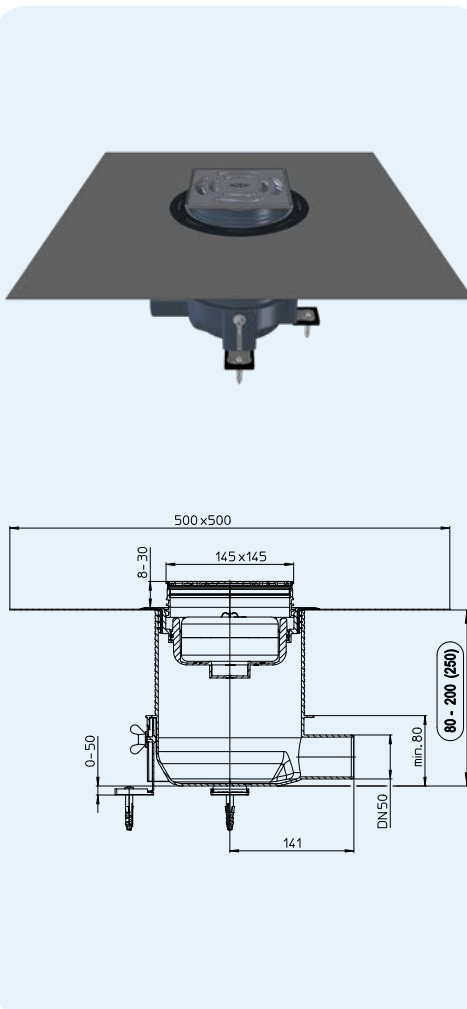
## HL540 „Primus Drain“ Shower drain, MIN. HEIGHT 80 MM !

## HL540I „Primus Drain“ Shower drain with individual tile hollow, MIN. HEIGHT 80 MM !

### Data

Capacity	20 mm above drain level: HL540=0,8l/s; HL540i=0,6/s 10 mm above drain level: HL540=0,55l/s; HL540i=0,45l/s
Material	PP/stainless steel, Frame: V4A Grate HL540=V2A Grate HL540i=V4A
Outlet	DN50 horizontal
Height	from 8 - 20 cm adjustable
Standard	EN 1253
Stench trap	5cm seal water, incl. Primus-trap, no stench without seal water
Additional information	incl. removable trap inlet, sealing kit with textile coated membrane, sound disconnected adjusting angles, protection cover and lot cover Soundproofing tested Test certificate: <a href="http://www.hl.at">www.hl.at</a>
Installation	The drain body might be fixed on the floor with 3 metal angles and can be adjusted in height afterwards. Advantage: maximum sced covering of the outlet pipe. New: It is no longer necessary to set the drain exactly on the right height of the screed. After filling in the screed, the salient nozzle is cut by a saw. The sealing kit may be inserted without any tools and takes care of a safe connection to the waterproofing. At the end the extension is adjusted and set into the drain. Please take care, that the edges of the frame are underlaid with tile glue to take maximum load.

Please also see  
installation movie at  
[www.hl.at](http://www.hl.at)



HL-No.	Material	Dimension	Weight	EAN	Piece/package
540	PP/Stainless steel	DN50	1533 g	+039029	1
540I	PP/Stainless steel	DN50	1898 g	+039098	1
540-Quadra	PP/Stainless steel	DN50	1898 g	+041817	1
540-Cut	PP/Stainless steel	DN50	1898 g	+041800	1
540-Hamam	PP/Stainless steel/ PVD-coated	DN50	1898 g	+041824	1

### HL540

#### HL0540.5E

HL03910.1E



HL03900.0E

HL0540.2E



HL2040



HL0540.4E

### HL540I



HL2040I

### HL540K



HL540.0E



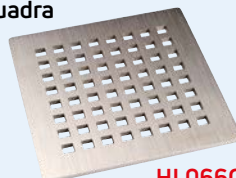
HL540.3E

## HL066Q.1E, HL066C.1E, HL0540I, HL3928, HL3128E Design grates

### Data

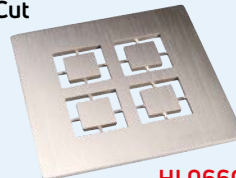
Material	Stainless steel
Grate	HL540I: 138x138mm massive, Tile hollow: 74x74 mm, depth 13mm
Load classification	L - max. 1,5t, HL0540I - K3
Recommended for	Shower drain HL540 or floor drain series HL5100, HL3100, HL72.1 and HL317

### Quadra



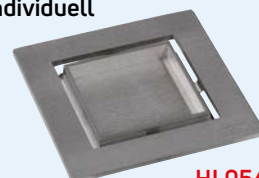
HL066Q.1E

### Cut



HL066C.1E

### Individuell



HL0540I

### Hamam (Stainless steel/ PVD-coated)

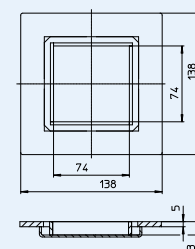


HL3928

### Hamam (Stainless steel)



HL3128E



HL-No.	Material	Dimension	Weight	EAN	Piece/package
066Q.1E	Stainless steel V2A	138 x 138 x 5 mm	607 g	+013623	1
066C.1E	Stainless steel V2A	138 x 138 x 5 mm	608 g	+031283	1
0540I	Stainless steel V4A	138 x 138 x 5 mm	638 g	+039104	1
3928	Stainless steel V4A/V2A/PVD-coated	138 x 138 x 5 mm	608 g	+031283	1
3128E	Stainless steel V2A	138 x 138 x 5 mm	595 g	+037094	1

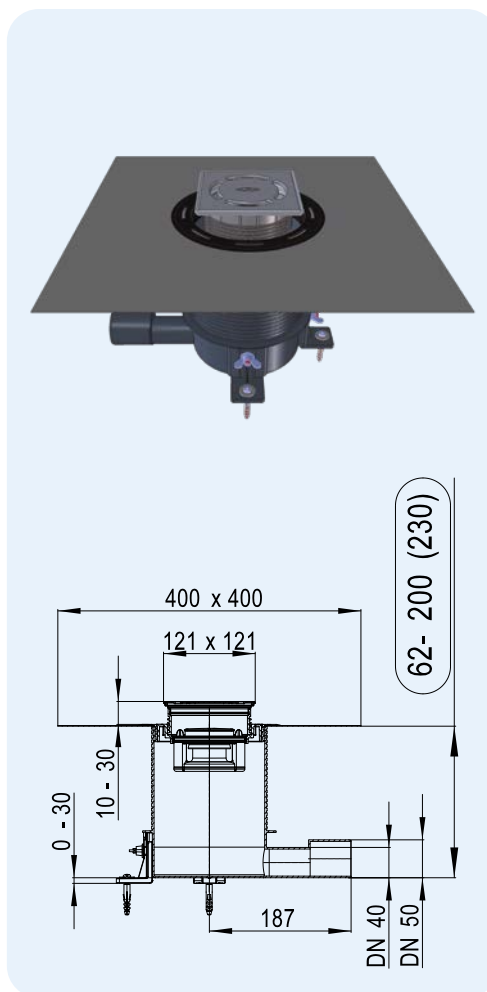
## HL541 Primus **blue** Flat shower drain, MIN. HEIGHT 62MM!

## HL541I Primus **blue** Flat shower drain with individual tile hollow, MIN. HEIGHT 62MM!

### Data

Capacity	20 mm above drain level: HL541=0,5l/s; HL541i=0,45/s 10 mm above drain level: HL541=0,4l/s; HL541i=0,4l/s
Material	PP/stainless steel, Frame: V4A Grate HL541=V2A Grate HL541i=V4A
Outlet	DN40/DN50 horizontal
Height	from 62 - 200 (230) mm
Standard	EN 1253
Load classification	K3 - max. 300 kg
Odor trap	New Primus <b>blue</b> , combined odor trap with sealing water and mechanical odor barrier (absolutely odor-tight even without water). Backflow-proof up to 50 cm accumulation height
Additional information	Incl. removable trap inlet, sealing kit with fleece laminated mem- brane, adjustable fixing angles, hair catcher, lot cover and protection cover.
Installation	The drain body might be fixed on the floor with 3 metal angles and can be adjusted in height afterwards. Advantage: maximum sced covering of the outlet pipe. New: It is no longer necessary to set the drain exactly on the right height of the screed. After filling in the screed, the salient nozzle is cut by a saw. The sealing kit may be inserted without any tools and takes care of a safe connection to the waterproofing. At the end the extension is adjusted and set into the drain. Please take care, that the edges of the frame are underlaid with tile glue to take maximum load.

Please also see  
installation movie and  
movie „function of  
Primus **blue**“  
at [www.hl.at](http://www.hl.at)



HL-No.	Material	Dimension	Weight	EAN	Piece/package
541	PP/Stainless steel	DN40/50	-	+047642	1
541I	PP/Stainless steel	DN40/50	-	+047659	1
541-Quadra	PP/Stainless steel	DN40/50	-	-	1

### HL541

#### HL0541.5E

HL037Pr.1E

HL037N.0E

HL0541.2E

HL2020

### HL541I

HL0541.4E

### HL541K

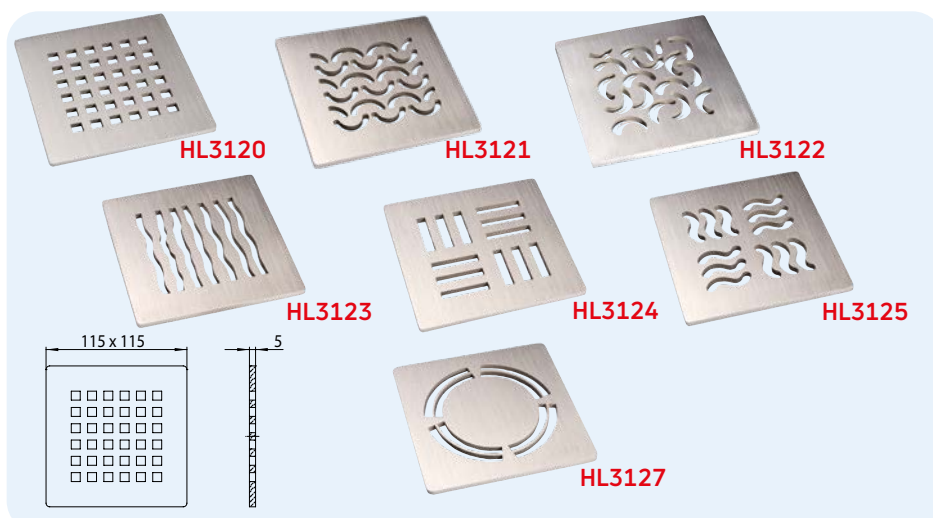
HL0541.0E

HL0541.3E

## HL0541I, HL3120, HL3121, HL3122, HL3123, HL3124, HL3125, HL3127 Design grates

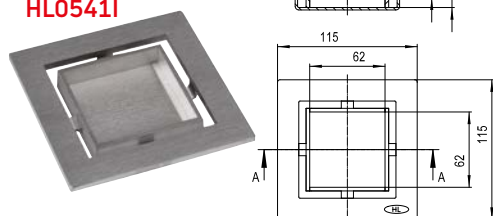
### Daten

Material	Stainless steel V4A
Grate	Stainless steel grate 115 x 115 mm
Load classification	L – max. 1,5 t
Recommended for	Floor drain series HL70, HL80, HL300, HL304, HL310, HL510, HL90 combined with extensions HL3200 or HL3210 HL0541I: HL541



HL-No.	Dimension	Weight	EAN	Piece/package
3120	115 x 115 mm	425 g	+015412	1
3121	115 x 115 mm	425 g	+015429	1
3122	115 x 115 mm	425 g	+015443	1
3123	115 x 115 mm	425 g	+015443	1
3124	115 x 115 mm	425 g	+015450	1
3125	115 x 115 mm	425 g	+015467	1
3127	115 x 115 mm	430 g	+029037	1
0541I	115 x 115 mm	800 g	+048304	1

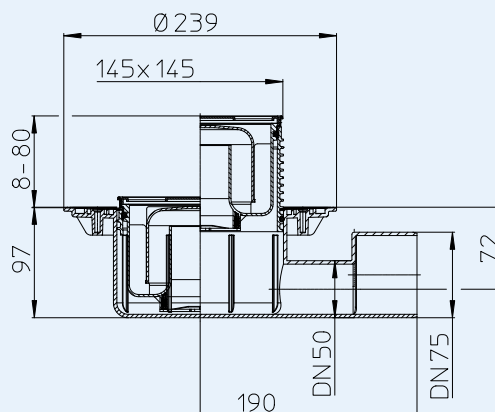
### HL0541I



## HL5100 Floor drain with high capacity

### Data

Capacity	1,0 l/s
Material	PE, stainless steel
Outlet	DN50/75, horizontal, pluggable and weldable
Extension	Stainless steel V4A, 145 x 145 mm, „Klick-Klack“-locking system, cuttable in height
Grate	Stainless steel V2A, 138 x 138 mm
Stench trap	Height of seal water 50 mm
Standard	EN 1253
Load classification	K 3 – max. 300 kg
Recommended for	e.g. barrier-free showers with high volume (Raindance)
Additional information	with stainless steel frame, Sound protection acc. ÖNORM B8115-2 is reached together with HL6200 sound insulation pad (see chapter accessories). Temperature-resistant up to 85 °C
Including	Supporting frame, lot cover



HL03910.1E



HL03900.0E



HL05100.7E



HL03910.2E



HL01093D



HL03100.0E



HL5100K

HL-No.  
5100

Dimension  
DN50/75

Weight  
1025 g

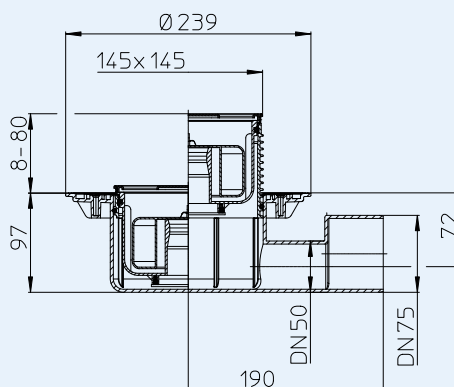
EAN  
+025442

Piece/package  
1

## HL5100Pr Floor drain with high capacity, with PRIMUS trap

### Data

Capacity	0,8 l/s
Material	PE, stainless steel
Outlet	DN50/75, horizontal, pluggable and weldable
Extension	Stainless steel V4A, 145 x 145 mm, „Klick-Klack“-locking system, cuttable in height
Grate	Stainless steel V2A, 138 x 138 mm
Stench trap	Height of seal water 50 mm and PRIMUS (No stench, with or without water)
Standard	EN 1253, ÖNORM B2501
Load classification	K 3 – max. 300 kg
Recommended for	e.g. barrier-free showers with high volume (Raindance)
Additional information	with stainless steel frame, Floor drainage especially at unfrequent use, no stench with or without water, refilling of water into the trap is no longer necessary! Sound protection acc. ÖNORM B8115-2 is reached together with HL6200 sound insulation pad (see chapter accessories). Temperature-resistant up to 85 °C
Including	Supporting frame, lot cover



HL03910.1E



HL03900.0E



HL2100



HL03910.2E



HL01093D



HL03100.0E



HL5100K

HL-No.  
5100Pr

Dimension  
DN50/75

Weight  
1069 g

EAN  
+025459

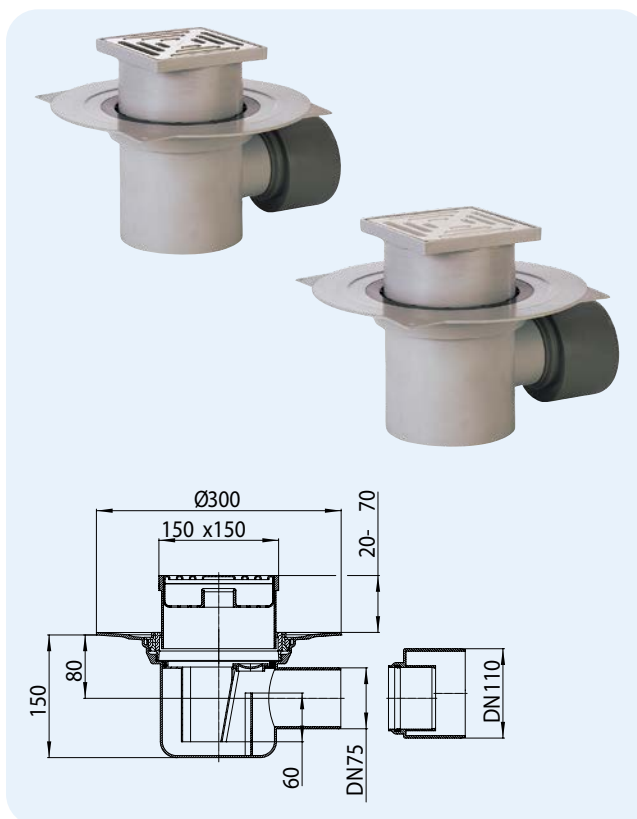
Piece/package  
1



## HL72.1N Floor drain HL72.1 like HL72.1, but with plastic grate

### Data

Capacity	1,5 l/s
Material	PP, stainless steel V2A
Outlet	DN75/110
Extension	150 x 150 mm, cuttable in height
Grate	HL72.1: Plastic grate 138 x 138 mm, HL72.1N: Stainless steel grate 138 x 138 mm
Stench trap	Height of seal water 60 mm
Standard	EN 1253
Load classification	K 3 – max. 300 kg
Recommended for	e.g. barrier-free showers with high volume (Raindance)
Additional information	temperature-resistant up to 95 °C
Including	Lot cover and Sand trap

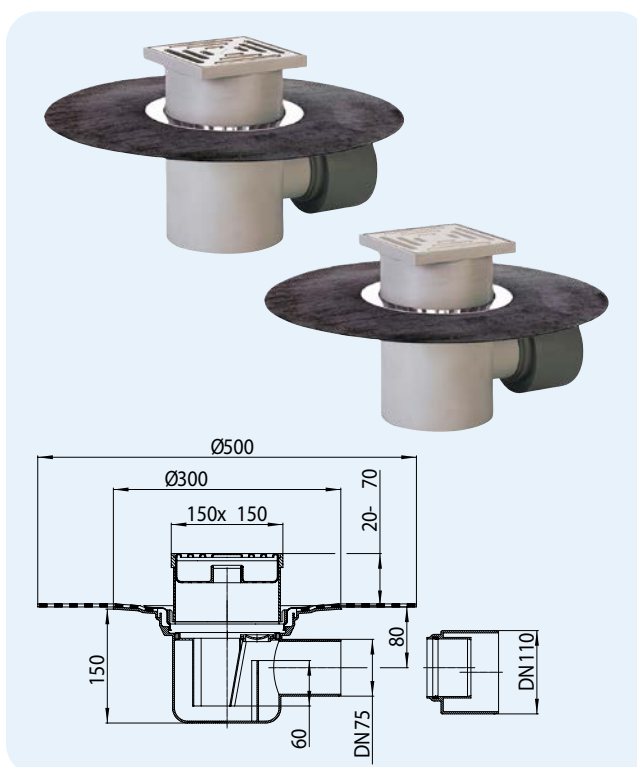


HL-No.	Dimension	Weight	EAN	Piece/package
72.1N	DN75/100	1330 g	+107216	1
72.1	DN75/100	1330 g	+710720	1

## HL72.1HN Floor drain with bitumen collar HL72.1H Floor drain with bitumen collar and plastic grate

### Data

Capacity	1,5 l/s
Material	PP, stainless steel V2A
Outlet	DN75/110
Extension	150 x 150 mm, cuttable in height
Grate	HL72.1H: Plastic grate 138 x 138 mm, HL72.1HN: Stainless steel grate 138 x 138 mm
Stench trap	Height of seal water 60 mm
Standard	EN 1253
Load classification	K 3 – max. 300 kg
Recommended for	e.g. barrier-free showers with high volume (Raindance)
Additional information	temperature-resistant up to 95 °C
Including	Lot cover and Sand trap



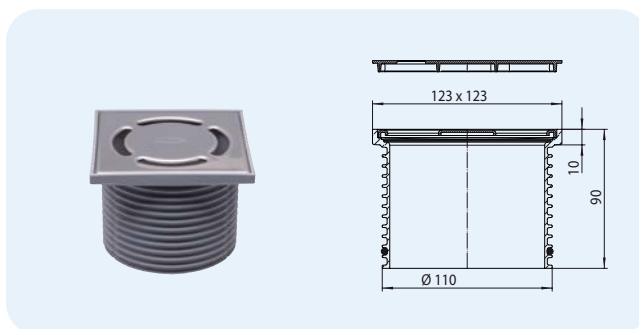
HL-No.	Dimension	Weight	EAN	Piece/package
72.1HN	DN75/100	2200 g	+072118	1
72.1H	DN75/100	2086 g	+997213	1

## HL Floor drains – Accessories – Data

### HL37N Standard extension

#### Data

Material	PP, stainless steel V2A
Extension	PP-Frame 123 x 123 mm, extension cuttable in height
Grate	Stainless steel grate 115 x 115 mm
Load classification	K 3 – max. 300 kg
Recommended for	Drain bodies of series HL70, HL80, HL300, HL304, HL310, HL510, HL90
Including	Supporting frame



HL-No.	Dimension	Weight	EAN
37N	Ø 110 mm / 123 x 123 mm	350 g	+015221

 HL037Pr.1E

 HL037N.0E

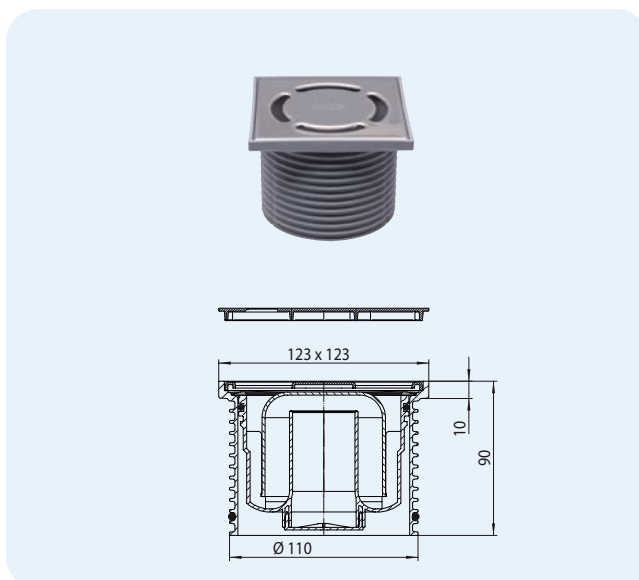
 **HL037N.2E**  
 HL01067D

Piece/package  
1

### HL37N.1 Extension with water trap HL37Prblue Extension with Primus **blue** trap HL37FPblue Extension with flat Primus **blue** trap

#### Data

Material	PP, stainless steel V2A
Extension	PP-Frame 123 x 123 mm, extension cuttable in height
Grate	Stainless steel grate 115 x 115 mm
Stench trap	HL37N.1: Water trap HL37Prblue: Primus <b>blue</b> trap HL37FPblue: Primus <b>blue</b> trap „flat“
Load classification	K 3 – max. 300 kg
Recommended for	Drain bodies of series HL310 and HL510
Including	Supporting frame



HL-No.	Dimension	Weight	EAN
37N.1	Ø 110 mm / 123 x 123 mm	380 g	+015245
37Prblue	Ø 110 mm / 123 x 123 mm	434 g	+051960
37FPblue	Ø 110 mm / 123 x 123 mm	402 g	+050536

**HL37N.1 HL37Prblue  
HL37FPblue**

 HL037Pr.1E  
|  
HL037Pr.1E  
 HL037N.0E  
 HL0510.7E  
 HL0510.12E  
 HL090.5E

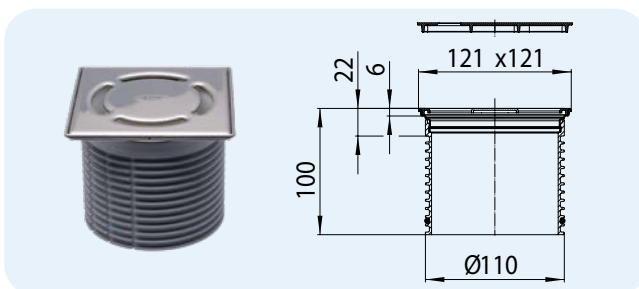
 **HL037N.2E**  
 HL01067D

Piece/package  
1  
1  
1

### HL3000 Extension system „Klick-Klack“ with stainless steel frame HL3011 Extension system „Klick-Klack“ with stainless steel frame, screwed

#### Data

Material	PE, stainless steel
Extension	Stainless steel frame 121 x 121 mm, extension cuttable in height, stainless steel V4A
Grate	Stainless steel grate 115 x 115 mm, stainless steel V2A
Load classification	K 3 – max. 300 kg
Recommended for	Drain bodies of series HL70, HL80, HL300, HL304, HL310, HL510, HL90
Including	Supporting frame



HL-No.	Dimension	Weight	EAN
3000	Ø 110 mm / 121 x 121 mm	340 g	+015313
3011	Ø 110 mm / 121 x 121 mm	340 g	+032624

 HL037Pr.1E

 HL037N.0E

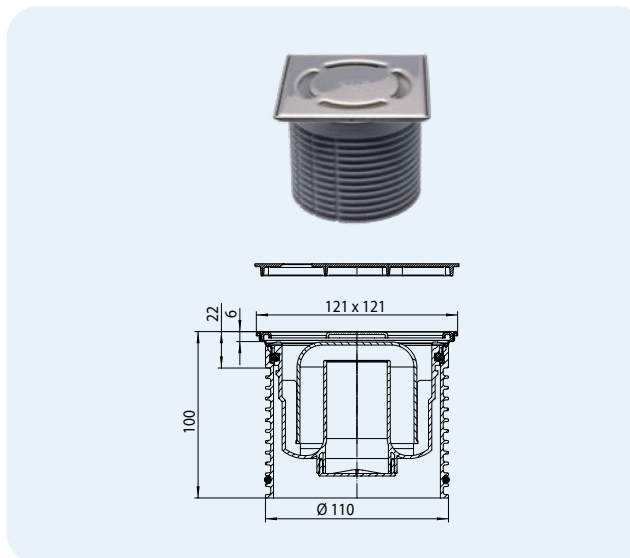
 **HL3200**  
 HL01067D

Piece/package  
1  
1

**HL3000.1** Extension „Klick-Klack“, including water trap  
**HL3000Prblue** Extension „Klick-Klack“, including Primus **blue** trap  
**HL3000FPblue** Extension, including Primus **blue** trap - flat

**Data**

Material	PE, stainless steel
Extension	Stainless steel frame 121 x 121 mm, extension cuttable in height, stainless steel V4A
Grate	Stainless steel grate 115 x 115 mm, stainless steel V2A
Stench trap	HL3000.1: Water trap HL3000Prblue: Primus <b>blue</b> trap HL3000FPblue: Primus <b>blue</b> trap „flat“
Load classification	K 3 – max. 300 kg
Recommended for	Drain bodies of series HL310 and HL510
Including	Supporting frame



HL-No.	Dimension	Weight	EAN	Piece/package
3000.1	Ø 110 mm / 121 x 121 mm	425 g	+015337	1
3000Prblue	Ø 110 mm / 121 x 121 mm	482 g	+051977	1
3000FPblue	Ø 110 mm / 121 x 121 mm	446 g	+050574	1

**HL3000.1 HL3000Prblue HL3000FPblue**



**HL3200**

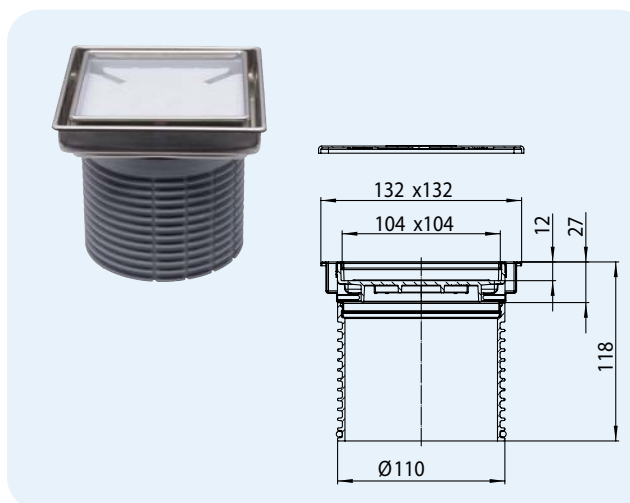


**HL3020** Tilable extension

**Data**

Material	PP, stainless steel V4A
Extension	132 x 132 mm with stainless steel frame, cuttable in height
Grate	Stainless steel frame and special grate, to be filled with tiles; Size of grate: 104 x 104 x 12 mm
Load classification	K 3 - max. 300 kg
Recommended for	e.g. tiled showers, SPA-area
Including	Lot cover

Fits for all drain bodies with higher lot cover HL70K-3020, HL80K-3020, HL90K-3020, HL300K-3020, HL304K-3020, HL310K-3020, HL510K-3020



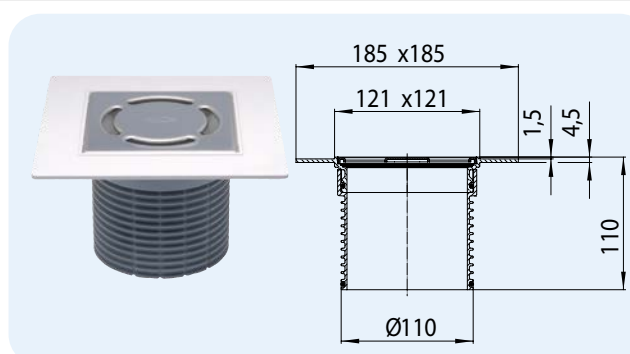
HL-No.	Dimension	Weight	EAN	Piece/package
3020	Ø 110 mm / 132 x 132 mm	350 g	+034253	1



**HL37NP** Extension with PVC frame and collar

**Data**

Material	PP/PVC, stainless steel V2A
Extension	PVC frame and collar 185 x 185 mm / 121 x 121 mm, Extension cuttable in height
Grate	Stainless steel grate 115 x 115 mm
Load classification	K 3 – max. 300 kg
Recommended for	PVC floor coverings, for gluing PVC coverings directly on the collar, fits to all floor drains of series HL70, HL80, HL300, HL304, HL310, HL510, HL90



HL-No.	Dimension	Weight	EAN	Piece/package
37NP	Ø 110 mm / 121 x 121 mm	340 g	+022762	1

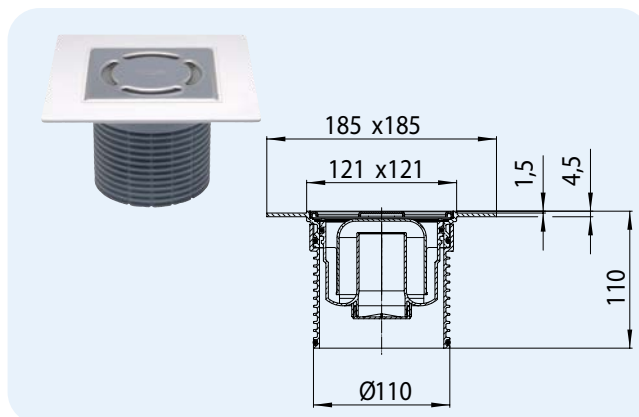


### HL37NP.1 Extension with PVC collar and frame, including water trap

### HL37PPrblue Extension with PVC collar and frame, including Primus **blue** trap

#### Data

Material	PP/PVC, stainless steel V2A
Extension	PVC frame and collar 185 x 185 mm / 121 x 121 mm, Extension cuttable in height
Grate	Stainless steel grate 115 x 115 mm
Stench trap	HL37NP.1: Water trap HL37PPrblue: Primus <b>blue</b> trap
Load classification	K 3 – max. 300 kg
Recommended for	PVC floor coverings, for gluing PVC coverings directly on the collar, fits to all floor drains of series HL310 and HL510



HL-No.	Dimension	Weight	EAN
37NP.1	Ø 110 mm / 121 x 121 mm	342 g	+022805
37PPrblue	Ø 110 mm / 121 x 121 mm	371 g	+052301

#### HL37NP.1 HL37PPrblue

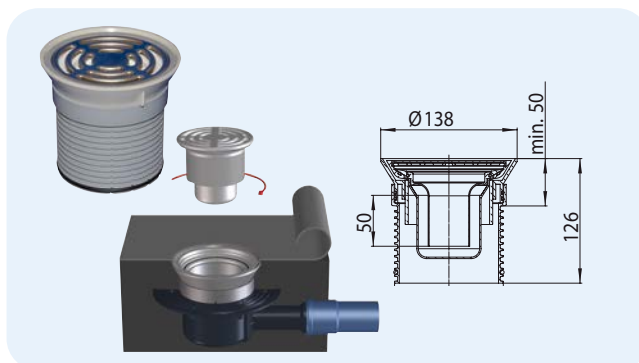


Piece/package
1

### HL38P Extension for connection to PVC- and rubber floor coverings

#### Data

Material	PP/ABS, stainless steel V2A
Extension	Plastic frame 138,5mm
Grate	Stainless steel grate V2A 115mm
Trap	Water trap with 50mm water height
Load classification	K 3 – max. 300 kg
Recommended for	clamping of PVC- or rubber floor coverings from 1-4 mm, fits for drain series HL70, HL80, HL300, HL304 HL310 and HL510



HL-No.	Dimension	Weight	EAN
38P	Ø 110 mm / Ø 115 mm	650 g	+036097

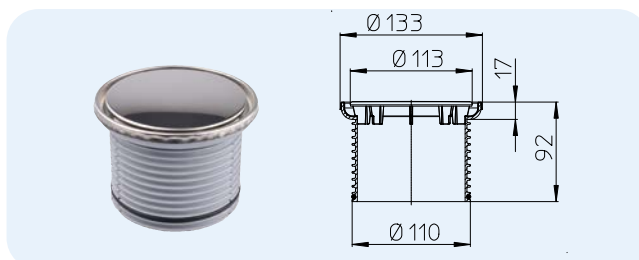


Piece/package
x

### HL38N Round extension

#### Data

Material	PP, stainless steel V2A
Extension	Stainless steel frame Ø 133 mm, extension cuttable in height
Grate	Stainless steel cover plate Ø 112 mm
Load classification	K 3 – max. 300 kg
Recommended for	tiled showers, fitting to floor drain series HL70, HL80, HL90, HL300, HL304



HL-No.	Dimension	Weight	EAN
38N	Ø 110 mm / Ø 133 mm	160 g	+004362



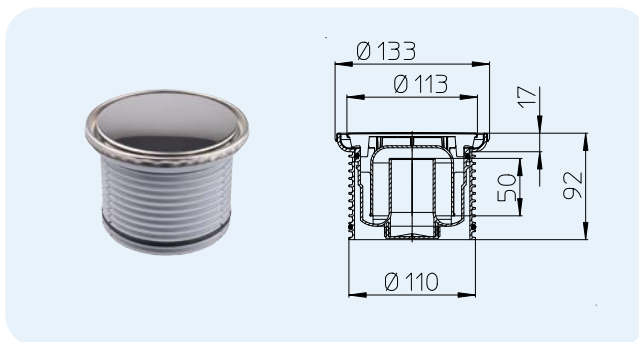
Piece/package
1

### HL38N.1 Round extension with water trap

### HL38Prblue Round extension with Primus **blue** trap

#### Data

Material	PP, stainless steel V2A
Extension	Stainless steel frame Ø 133 mm, extension cuttable in height
Grate	Stainless steel cover plate Ø 112 mm
Stench trap	HL38N.1: Water trap HL38Prblue: Primus <b>blue</b> trap
Load classification	K 3 – max. 300 kg
Recommended for	tiled showers, fitting to floor drain series HL310 and HL510



HL-No.	Dimension	Weight	EAN
38N.1	Ø 110 mm / Ø 133 mm	435 g	+015498
38Prblue	Ø 110 mm / Ø 133 mm	494 g	+051984

#### HL38N.1 HL38Prblue

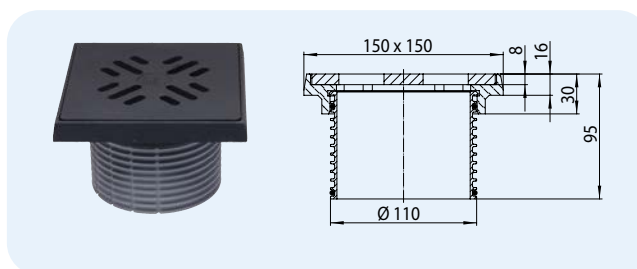


Piece/package
1

## HL39G Extension with cast iron frame and grate

### Data

Material	PP, cast iron
Extension	Cast iron 150 x 150 mm, extension cuttable in height
Grate	Cast iron 137 x 137 mm
Load classification	L15 bzw. A15 – max. 1,5 t
Recommended for	Mastic asphalt, car parks; Drain bodies of series HL70, HL80, HL300, HL304, HL310, HL510, HL90



HL-No.	Dimension	Weight	EAN
39G	Ø 110 mm / 150 x 150 mm	2025 g	+000647

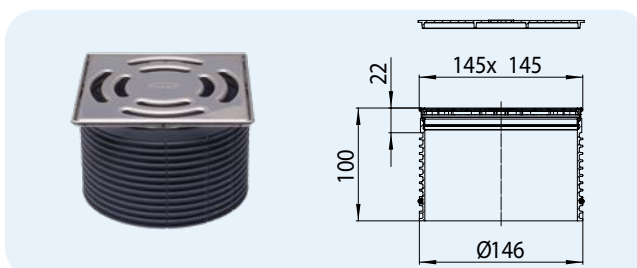


Piece/package
1

## HL3910 Extension for HL3100 and 5100 series

### Data

Material	PP, stainless steel V2A
Extension	Stainless steel frame V4A 145 x 145 mm, extension cuttable in height
Grate	Stainless steel grate V2A 138 x 138 mm
Load classification	K 3 – max. 300 kg
Recommended for	Drain bodies of series HL3100 and HL5100
Including	Supporting frame



HL-No.	Dimension	Weight	EAN
3910	Ø 146 mm / 145 x 145 mm	467 g	+025534

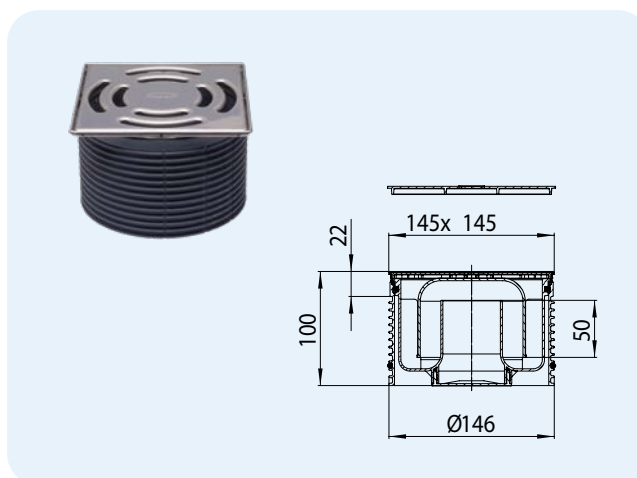


Piece/package
1

## HL3910.1 Extension for series 60 Plus, including water trap HL3910Pr Extension for series 60 Plus, including Primus trap

### Data

Material	PP, stainless steel
Extension	Stainless steel frame V4A 145 x 145 mm, extension cuttable in height
Grate	Stainless steel grate V2A 138 x 138 mm
Stench trap	HL3910.1: Water trap HL3910Pr: Primus trap
Load classification	K 3 – max. 300 kg
Recommended for	Drain bodies of series HL3100 and HL5100
Including	Supporting frame



HL-No.	Dimension	Weight	EAN
3910.1	Ø 146 mm / 145 x 145 mm	592 g	+025541
3910Pr	Ø 146 mm / 145 x 145 mm	630 g	+025558

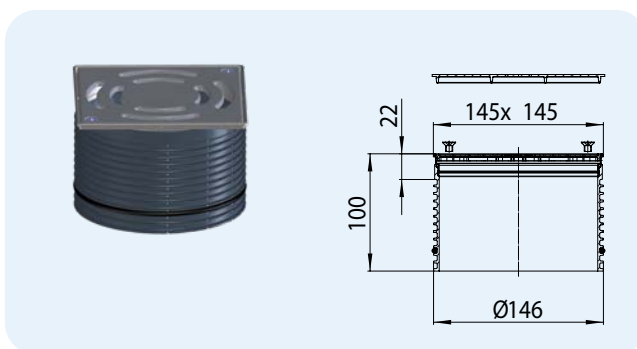


Piece/package
1

## HL3911 Extension for series 60 Plus with screwable grate

### Data

Material	PP, stainless steel
Extension	Stainless steel frame V4A 145 x 145 mm, extension cuttable in height
Grate	Stainless steel grate V2A 138 x 138 mm
Load classification	K 3 – max. 300 kg
Recommended for	Drain bodies of series HL3100 and HL5100
Including	Supporting frame



HL-No.	Dimension	Weight	EAN
3911	Ø 146 mm / 145 x 145 mm	470 g	+028252



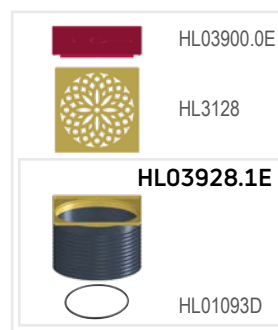
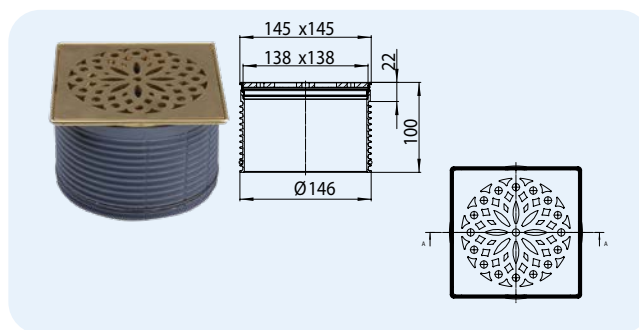
Piece/package
1



## HL3928 Extension „HAMAM“ for floor drain series HL3100 and HL5100

### Data

Material	PP, stainless steel
Extension	Brass plated stainless steel V4A frame 145 x 145 mm
Grate	Brass plated stainless steel V2A 138 x 138 mm
Load classification	L 15 - max. 1,5 t
Recommended for	Floor drain series HL3100 and HL5100

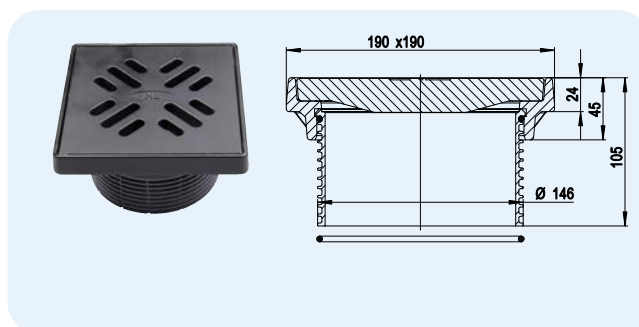


HL-No.	Dimension	Weight	EAN	Piece/package
3928	Ø 146 mm / 145 x 145 mm	776 g	+034796	1

## HL3910G Extension cast iron for floor drain series HL3100 and HL5100

### Data

Material	PP, Cast iron
Extension	Cast iron frame 190 x 190 mm, height 45 - 80 mm
Grate	Cast iron grate 175 x 175 mm
Load classification	B - 12,5 t
Recommended for	Car parks, warehouses, garbage rooms, mastic asphalt; fits for drain bodies of series HL3100(T) and HL5100(T)

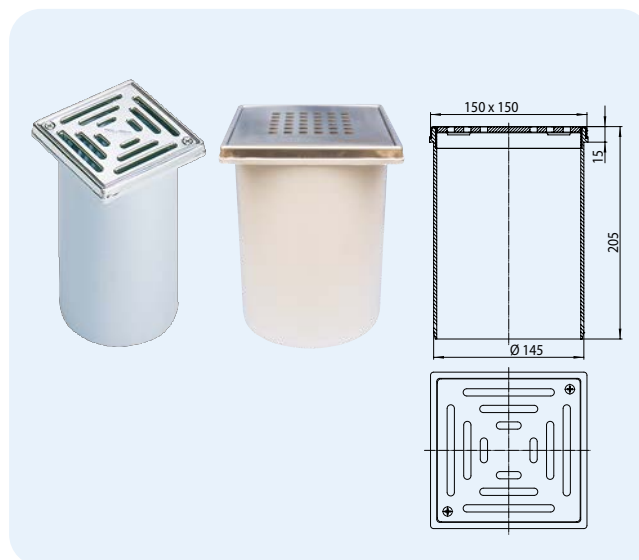


HL-No.	Dimension	Weight	EAN	Piece/package
3910G	Ø 146 mm / 190 x 190 mm	5400 g	+048793	1

## HL66, HL66Q, HL66.1 Extensions with screwable grate

### Data

Material	PP, Stainless steel
Extension	Stainless steel frame V2A, 150 x 150 mm, extension cuttable in height
Grate	HL66 Screwable stainless steel grate V4A 138 x 138 mm HL66Q Design grate V4A 138 x 138 mm „Quadra“ HL66.1 Anti-slip grate V4A 138 x 138 mm, stainless steel, screwable
Load classification	L 15 – max. 1,5 t
Recommended for	Drain bodies of series HL72.1 and HL317



HL-No.	Dimension	Weight	EAN	Piece/package
66	Ø 145 mm / 150 x 150 mm	915 g	+700660	1
66Q	Ø 145 mm / 150 x 150 mm	1070 g	+013609	1
66.1	Ø 145 mm / 150 x 150 mm	1000 g	+702664	1

### HL66.3 Extension with stainless steel grate

### HL66.4 Extension with plastic grate

#### Data

Material	HL66.3: PP, Stainless steel V2A HL66.4: PP
Extension	PP-Frame 150 x 150 mm, Extension cuttable in height
Grate	HL66.3: Stainless steel grate 138 x 138 mm HL66.4: Plastic grate 138 x 138 mm
Load classification	K 3 – max. 300 kg
Recommended for	Drain bodies of series HL72.1 and HL317



#### HL66.3



HL0317.1E

#### HL66.4



HL072.1E



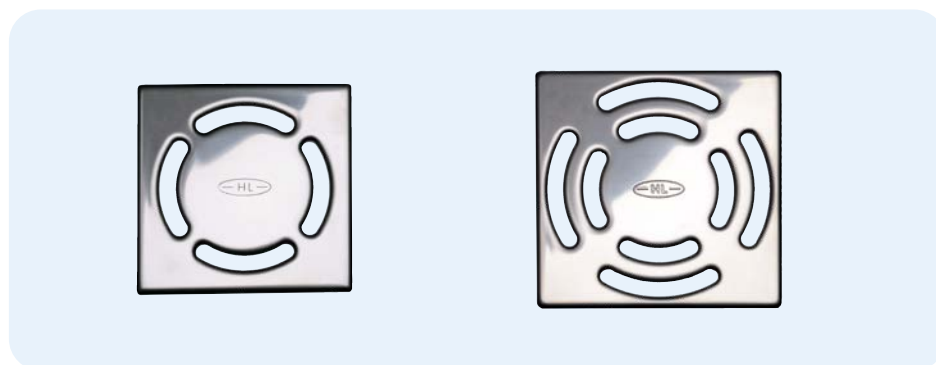
HL0317.2E

HL-No.	Dimension	Weight	EAN	Piece/package
66.3	Ø 145 mm / 150 x 150 mm	352 g	+014545	1
66.4	Ø 145 mm / 150 x 150 mm	238 g	+014569	1

### HL3110, HL03910.3E Stainless steel grate V4A

#### Data

Material	Stainless steel V4A
Grate	HL3110: Stainless steel grate 115 x 115 mm HL03910.3E: Stainless steel grate 138 x 138 mm
Load classification	K 3 – max. 300 kg
Recommended for	chlorinated sewer, e.g. in swimming pools

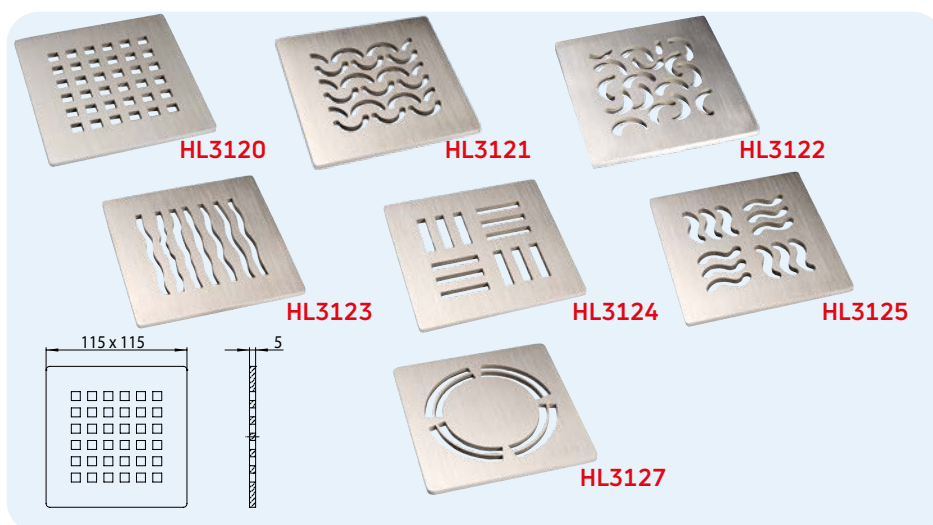


HL-No.	Dimension	Weight	EAN	Piece/package
3110	115 x 115 mm	162 g	+015634	1
03910.3E	138 x 138 mm	255 g	+025916	1

## HL3120, HL3121, HL3122, HL3123, HL3124, HL3125, HL3127 Design grates

### Data

Material	Stainless steel V2A
Grate	Stainless steel grate 115 x 115 mm
Load classification	L – max. 1,5 t
Recommended for	Floor drain series HL70, HL80, HL300, HL304, HL310, HL510, HL90 combined with extensions HL3200 or HL3210



HL-No.	Dimension	Weight	EAN	Piece/package
3120	115 x 115 mm	425 g	+015412	1
3121	115 x 115 mm	425 g	+015429	1
3122	115 x 115 mm	425 g	+015443	1
3123	115 x 115 mm	425 g	+015443	1
3124	115 x 115 mm	425 g	+015450	1
3125	115 x 115 mm	425 g	+015467	1
3127	115 x 115 mm	430 g	+029037	1