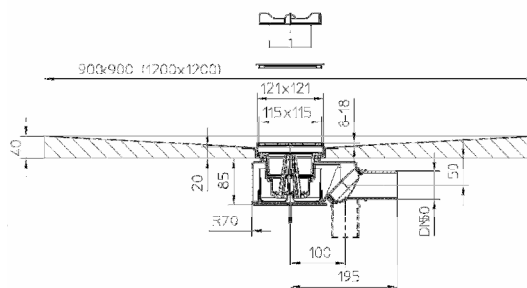
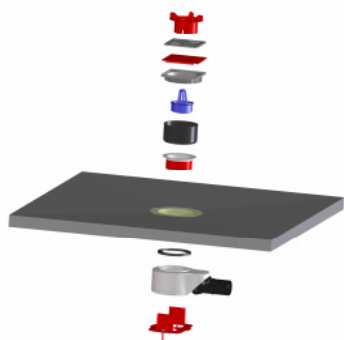


PRODUCT – INFORMATION 01 / 2011

New at HL



HL 523N Shower board with new high capacity trap 1,1 l/s - horizontal and 1,35 l/s - vertical



Product description

Barrier-free shower systems on the one hand and on the other hand high capacity showers are asking for high drainage capacity to guarantee highest shower convenience for the user. Therefore, HL will supply its shower boards of series HL523N from beginning of April 2011 with new traps.

Characteristics in comparison:

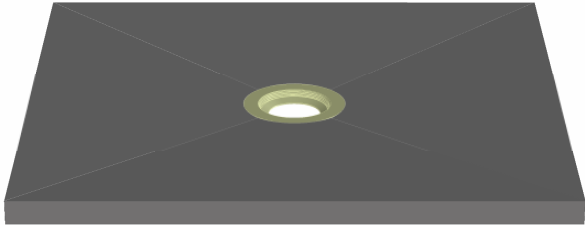
- **Capacity** Connection horizontal: **1,1l/s** (now 0,5 l/s)
Connection vertical: **1,35l/s** (now 0,5 /s)
- **Connection:** Material PE, pluggable and weldable, convertible from horizontal to vertical with ball-joint (as now).
- **Dimension:** DN50 (now DN40 and DN50)
- **Visible parts** same as now
Fixing element is adjusted to the new drain body
- **Additional hair catcher:** Avoids the plugging of the drain pipe in advance.
- **Siphon:** Removable, therefore access to the drain pipe.
- **Gasket:** Pre-fixed on the drain body, avoids the shifting of the gasket during installation
- **Board:** as now
- **Installation height:** as now

Installation:

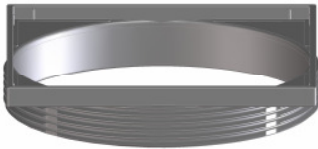
Please find a detailed instruction for a perfect installation on www.hutterer-lechner.com – downloads – Information.



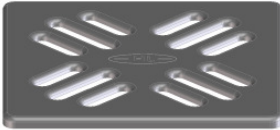
HL0523N-90x90E
(HL0523N-120x120E)
Shower board 90x90cm (120x120cm)



HL0523N.2E
Extension 121x121mm (ABS/CR)
adjustable in height 8-18mm



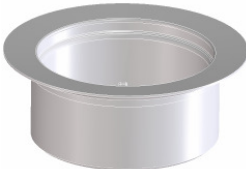
HL037N.1
Grate 115x115mm stainless steel
(1.4301), load classification K3.


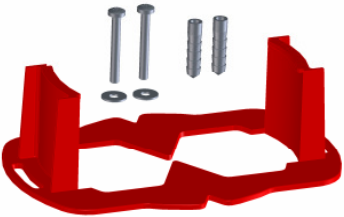


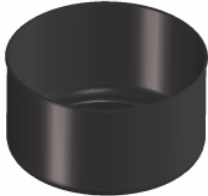


HL0520.3E
Hair catcher (PP)
Siphon water height 50mm
together with the siphon cartridge



HL0520.1E
Screw (PP)
Fixing acc. standard
from 6-24mm
with 3mm thread pitch.



<p>HL01100D Gasket (NK/SBR) for a save connection between drain and shower tray</p>	
<p>HL0523.0E Fixing element</p>	
<p>HL037N.0E Supporting frame (ABS)</p>	
<p>HL0520.0E Lot cover/crewdriver (PP)</p>	
<p>HL0520.2E Siphon cartridge (NK/SBR) flexible and removable, resistant against drain water</p>	
<ul style="list-style-type: none"> ● Accessories: HL523U-90x90 (-120x120), HL3120, HL3121, HL3123, HL3124, HL3125 ● Package: Single in carton ● Weight: 5800g (9500g) / piece ● EAN-Code: 90x90 single 9003076025947 / 90x90 multiple 9003076025954 120x120 single 9003076025961 / 120x120 multiple 9003076025978 ● Prices: stay the same as now 	

HL523N Shower board

capacity/water level to EN1253

