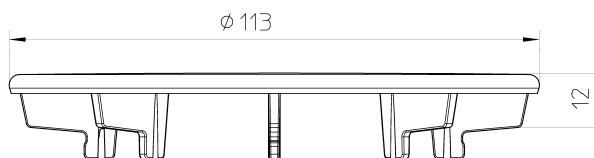


PRODUCT – INFORMATION # 03 / 2011

New at HL



HL520 – HL522 – HL522V - HL522.1(.2,.3,.11)



Product Description

From now on our shower tray siphons **HL520**, **HL522** and **HL522V** are equipped with flat stainless steel cover plates.

The shower tray siphons HL520N, HL522N and the cover plate HL522N.1, at the moment delivered with chrome-plated ABS covers, will be cancelled.

The switch to the new model will be current.

Attitudes of the cover:

- Dimensions: $\varnothing 113 \times 12$
- Material: PP/Stainless steel (1.4301)

Advantages:

- Increased stability compared to the chrome-plated ABS-cover
- Flat design
- Higher quality – same price!



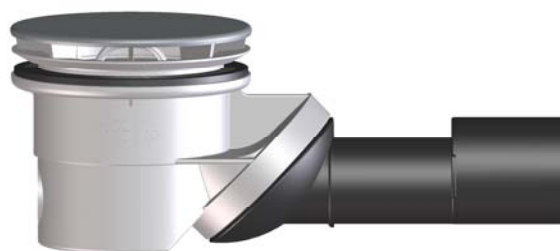
HL520

High capacity trap for tray holes
Ø90mm



HL522





Trap for tray holes
Ø90mm



HL522V

Trap for tray holes
Ø90mm
with tube connector



<p style="text-align: center;">HL522.1</p> <p style="text-align: center;">Stainless steel cover (flat model)</p>	
<p style="text-align: center;">HL522.11</p> <p style="text-align: center;">Gold-plated cover (flat model)</p>	
<p style="text-align: center;">HL522.2</p> <p style="text-align: center;">Solid brass cover (flat model)</p>	
<p style="text-align: center;">HL522.3</p> <p style="text-align: center;">White cover (flat model)</p>	
<ul style="list-style-type: none"> ● Accessories: --- ● Package: as now ● Weight: as now ● EAN-Code: as now ● Prices: as now 	