

PRODUCT INFORMATION No. 4 / 2013

New at HL

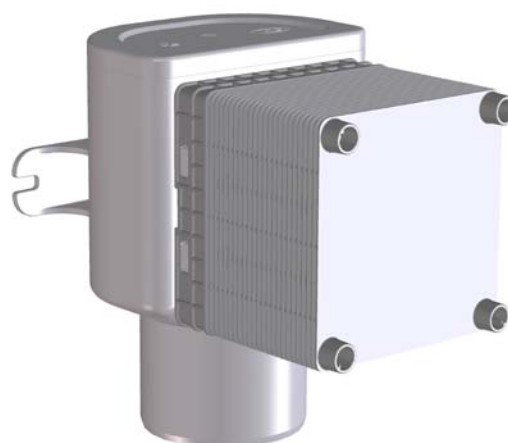


HL905 / HL905.0 Concealed air admittance valve

HL905



HL905.0



Installation



HL HUTTERER & LECHNER GmbH, Brauhausgasse 3 -5 , 2325 HIMBERG,
Tel.: +43/(0)2235/86291-0; FaxDW 31 od. 52; <http://www.hutterer-lechner.com>; e-mail: office@hutterer-lechner.com

The European standard EN 12380 regulates the use of air admittance valves and therefore creates a time and cost saving possibility of the ventilation of pipe systems.

Function:

Air admittance valves open at vacuum, so that air might flow into the pipe system. When the pressure is compensated, the valve closes and avoids, that gas might rise from the sewer. The pressure compensation makes sure, that all connected siphons and traps are working. The resilient construction of HL air admittance valves ensures high safety in permanent use. They are validated and match with all EU-standards.

Product description

- ✓ **Complete set including cover (HL905.0 without cover)**
- ✓ **Easy to install**
- ✓ **Open access to the waste pipe**
- ✓ **High air flow rate 12l/sec**
- ✓ **Resilient and approved construction**

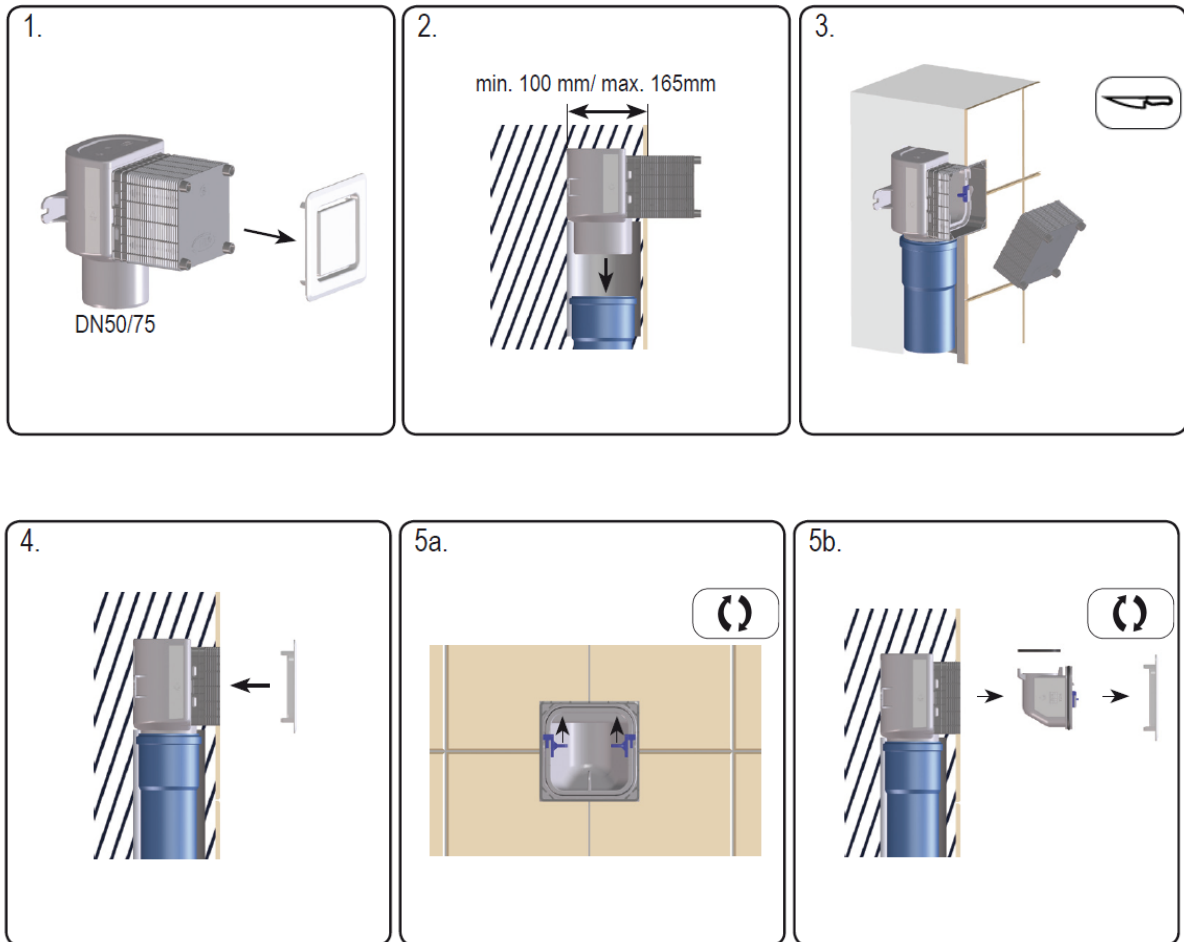
HL905 is the first compact, complete and consealed air admittance valve with removable functional cartridge, lot cover and cover for pipe dimensions DN50 and DN75, by using the reduction HL0317.4E also DN110.

It might be used for normal or dry wall installation and ensures the ventilation of secondary waste pipes. If secondary waste pipes are more than 4m away from the downpipe, these pipes must be connected to an additional ventilation pipe system or might be connected to an air admittance valve, which is the cheaper version

The main advantages of this product, compared to competitor products are the compact shape, the removable functional cartridge and the cuttable lot cover. The standard cover is white but also available in black, grey and chrome surface. The functional cartridge may be removed for revision and for cleaning.

A nice side effect: By removing the cartridge, you get full access to the waste pipe system.

Installation:



Please consider:

- The installation is allowed only vertically.
- Care for enough air flow.
- There must be access to the valve for revision.
- The installation is minimum 10cm above the horizontal waste pipe.
- The usage below the flood level is only allowed, when the waste pipe is secured by a backwater valve.
- A connection to pumping stations is not allowed.

Technical data:

- Installation depth : min. 100mm – max.165mm
- Width / height: 105 x 105 mm (lot cover)
160/125x177 mm
- Cover: 125 x 125 mm
- Connection: DN50/75 (Spitzende), DN110 mit Adapter (Zubehör)
- Material: ABS / PP
- Standard: EN12380-AII (Temperaturbereich 0-60°)
- Air flow rate: 12 l/s

Spare parts

HL0905.1E
Lot cover



HL0905.2E
Functional cartridge



HL905.1
White cover



Accessories

HL905.2
Crome cover



HL905.3
Black cover



HL905.4
Grey cover



HL0317.1E
Reduction DN110xDN75



HL905 - 905.0 package:

Single in PE-shrink foil / 10 pieces in carton box / 200 pieces on pallet

HL905 Weight: 0,39kg/piece

HL905 EAN-Code: 9003076036011

HL905.0 Weight: 0,34kg/piece.

HL905.0 EAN-Code: 9003076036066

Price: see price list

HL905 – technical drawing

Schnitt A-A

