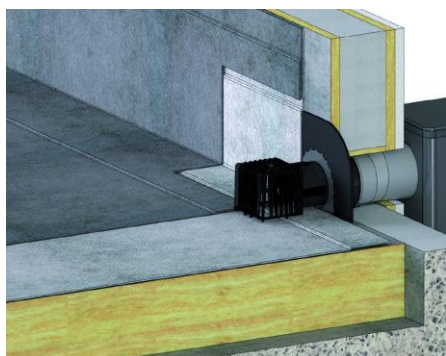


Info 01/2020 Attica drains - Addendum

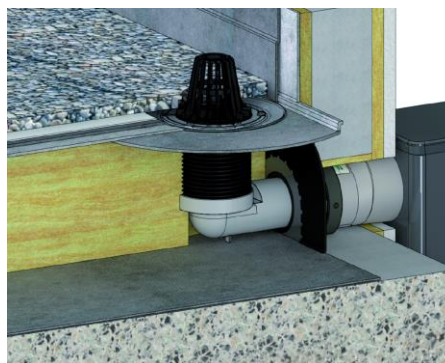
Flow capacities HL68-series attica drains

Basically attica drains are connected to the waterproofing level and are equipped with a leaf catcher, independent of different roof constructions or layers of the roof. Rain water is lead to the sewer system on the slope of the waterproofing and through the attica drain. (Normally) very low water-surface heights, e.g. 35mm and horizontal drainage of the rain water lead to relatively low flow capacities, compared to roof drains with vertical outlet.

Also with attica drains high capacity flow rates are possible: By installing the attica drain on the vapour barrier instead of installing it on the waterproofing, as usual. By using HL68 accessories it is possible, to benefit from the higher water surface height and reach higher flow rates. The result: Less drains, less attica openings, less downpipes and last but not least less costs!



Pic. 1: Attica drain on the thermal insulation. With 35mm water level **0,88l/s**



Pic 2: Attica drain on the vapour barrier. With 200mm water level (=200mm thermal insulation) **3,13l/s**

Both constructions in comparison: Installation on the vapour barrier lead to approximately 3.5 times higher flow rate.

Another important advantage of this kind of construction: During the construction phase it is possible to drain rainwater already on the vapour barrier. This temporary drainage protects the structure of the roof dry.

Please also see the attached pdf-chart, including different setups and flow rates.