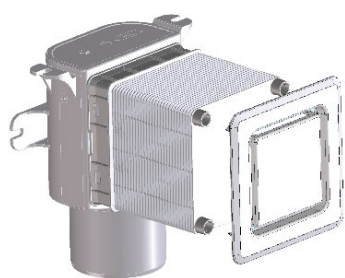
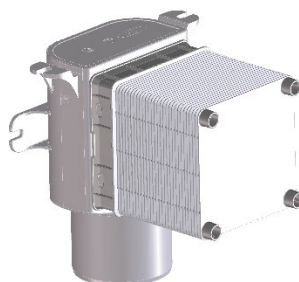


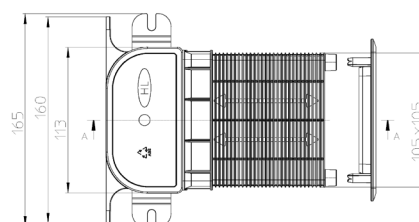
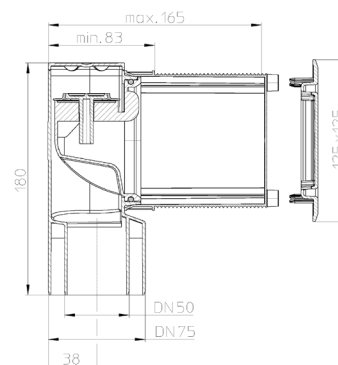
HL905N/HL905N.0 Concealed air admittance valve



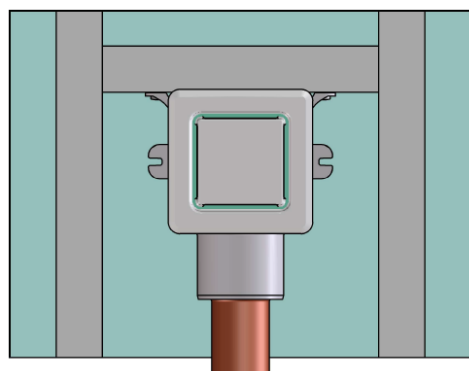
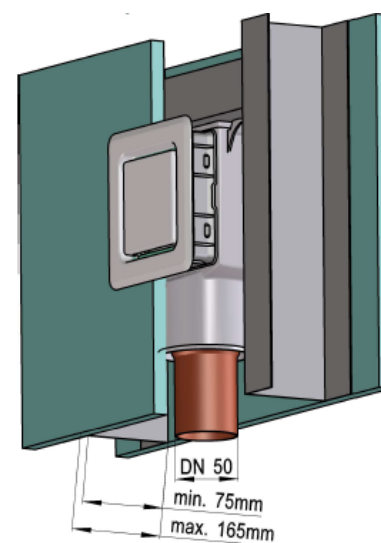
HL905N



HL905N.0



The new concealed air admittance valve HL905N/HL905N.0 differentiates from its predecessor HL905 through the flat construction. This innovation now also allows the installation of the valve in drywalls with a depth of only 75 mm. The total depth of the valve (165 mm) did not change. To maintain that, the lot cover was extended. The previous model is going to be replaced in the first quarter of 2021.



Additionally, two fastening straps were attached on the top of the valve. The straps allow the valve to be fastened to horizontal profiles. Complete cartridge, membrane and lot cover were revised and are not compatible with the predecessor HL905/HL905.0. The covers were not changed and are built in and delivered as before. In spite of the flat construction the air passage capacity of 13 l/s has not changed.

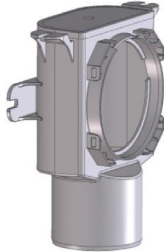


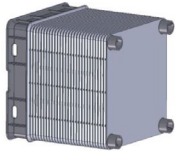

Installation notes:

- The air admittance valve is built in vertically.
- Air supply has to be ensured.
- For maintenance reasons the access to the valve has to be guaranteed.
- The usage below the anti-flood level is allowed as long as the drain pipe is secured against backwater
- The connection to lifting systems is not allowed

Technical data:

- Installation depth: min. 75 mm – max. 165 mm
- Width/height: 105 x 105 mm (lot cover)
- Cover: 125 x 125 mm
- Dimension: DN50/75, with minimal installation depth only DN50 is possible! DN110 with adapter HL0317.4E
- Material: ABS/PP
- Standard: EN12380 – All (temperature range -20°C/+60°C)
- Capacity: 13 l/s

Spare parts:

Air admittance case	
HL0905N.2E complete cartridge for HL905N	
HL0905N.3E membrane for HL905N	
HL0905N.1E lot cover for HL905N	
HL905.1 white cover for HL905N + HL905N.0	

Packaging data: 10 pcs./box; 200 pcs./ pal.

Price: Same as HL905; s. pricelist

Available: first quarter 2021