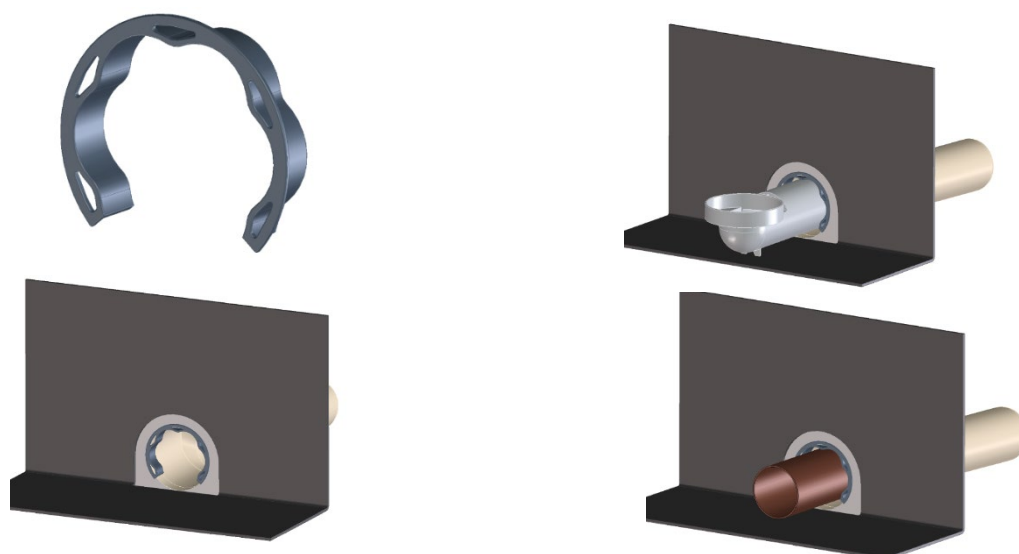


## HL163.1 Gravel guard for HL68 Attica series



The gravel guard HL163.1 is developed especially for warm roofs and extends the range of accessories for the attica drain series HL68 with another part.

The gravel guard enables the drainage of condensation and leak water on the vapour barrier but does not influence the water flow of the main drainage into the attica drain. With warm roofs this has to be combined with the HL164 and the HL85N(H) element (see installation example).

Capacity: 0,25l/s (35mm water level above sealing flange)

0,7l/s (90mm water level above sealing flange)

Due to this values the installation in reversal constructions with small flat roofs is also possible

The HL attica drain can also be used as a leakproof pipe sleeve and inducing of a horizontal drainpipe (DN70) connected to a point drain. In this case leak water can also be drained on the vapour barrier.

Available immediately