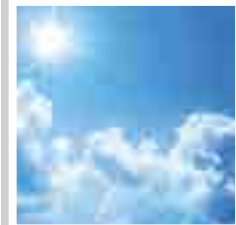




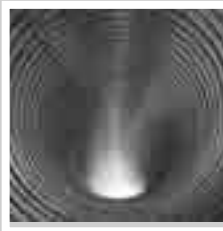
SIPHONS ABLÄUFE



HL Siphons

107. Air condition and ventilation

7



HL Stench traps for air condition and ventilation

Basic information about design and installation

Mostly the connection of condensate water or dripping water to the waste water system is forgotten, when planning. A proper waste water draw-off is mostly left to the creativity of the plumber - and therefore very prone to error. At the same time different problems occur, when you drain little quantities of liquids, which may be solved already in advance during planning. Hereafter we like to offer you some proposals:

▲ Self-cleaning

Drains, which are used for little quantities of liquid (condensate water, dripping water of heating systems or boilers) are difficult just because the little flow velocity - because there is no self-cleaning effect in the siphon. Therefore it makes sense, to care for a sufficient diameter of the sewage pipe; Minimum: DN32. Beside of that we recommend to install horizontal pipes in direction to the siphon with a minimum incline of 10%.

▲ Stench trap

When the connected device is not working for a longer time, the seal water might evaporate. Therefore please take care, that you have enough height of seal water inside the trap (HL136.2) or to have an additional mechanical trap inside (HL136N, HL136.3, HL138, HL138(H) and HL21).

▲ Maintenance/cleaning

With flush-mounted traps (only HL138(H)!) please take care, that you have a constant access to the stench trap. The inspection intervals are depending on the kind and quantity of the fine dust in the air (with air conditioners minimum before start of the season in spring time).

▲ Pressure differences

With central air conditioners or ventilation facilities the trap has to be installed in that way, that on the one hand in case of vacuum no air from the surrounding room gets into the device, and on the other hand, that in case of overpressure no air escapes from the device.

HL136.2: Suitable for vacuum or overpressure up to 2800 pascal (28cm water column). This trap is equipped with transparent pipes to control the height of the seal water and with an additional hose nozzle for refilling.

HL136N and HL136.3: These traps prevent air from getting into the device. Suitable for vacuum up to 1300 pascal (13cm water column), depending on the length of the immersion tube.

Relevant standards/directives

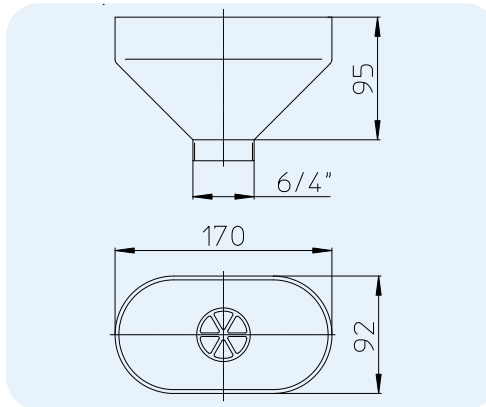
EN 12056..... Gravity drainage systems inside of buildings
 DIN 19541 Siphons for special purposes
 ÖNORM H 6020 Ventilating systems for medical used rooms - Development, construction, operation, maintenance, technical and hygienic supervision

HL Traps for air condition and ventilation – Products – Data

HL20 Drip funnel

Data

Material	PP
Connection dimension	170 x 92 mm
Outlet dimension	6/4"
Recommended for	the drainage of dripping water and sewage, which is not allowed to have a direct connection to the sewer
Additional information	including pipe clip, stench trap possible in combination with e.g. HL100

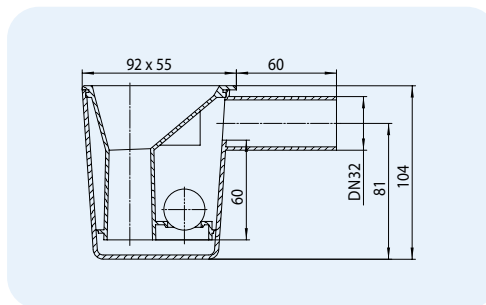


HL-No.	Dimension	Weight	EAN	Piece/package
20	6/4"	115 g	+500208	1

HL21 Drip funnel including trap

Data

Capacity	0,17 l/s
Material	PP
Connection dimension	92 x 55 mm
Outlet dimension	DN32
Stench trap	60mm seal water with additional mechanical ball trap
Standard	DIN 19541, EN 1451
Recommended for	Connections with inconstant water flow
Additional information	also odourless without seal water

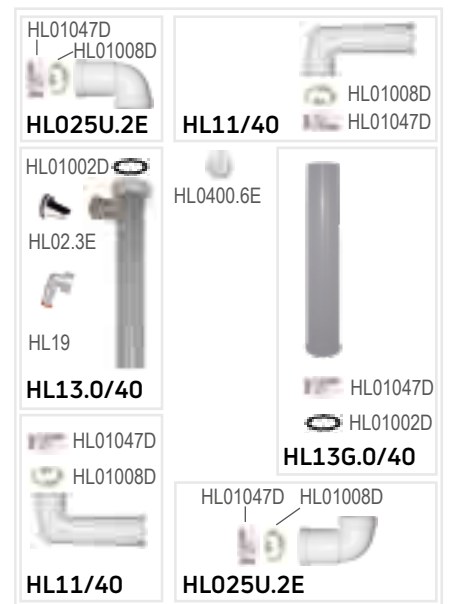
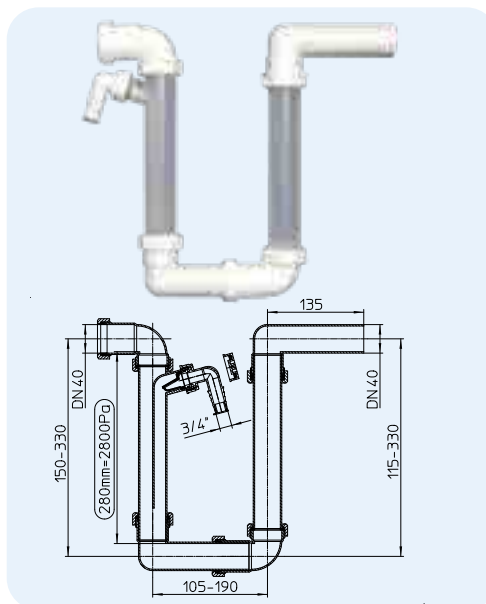


HL-No.	Dimension	Weight	EAN	Piece/package
21	DN32	90 g	+500215	1

HL136.2 Stench trap for condensate with seal water

Data

Material	PP
Connection dimension	DN40
Outlet dimension	DN40
Stench trap	280 mm seal water
Standard	DIN 19541
Recommended for	vacuum - or overpressure pipes (connection to suction- or discharge side)
Additional information	with average sealing water 2800 PA airtight on the suction or discharge side, with hoze nozzle for refilling



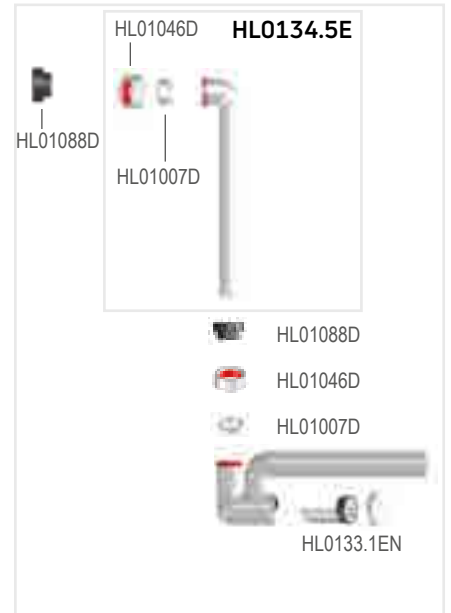
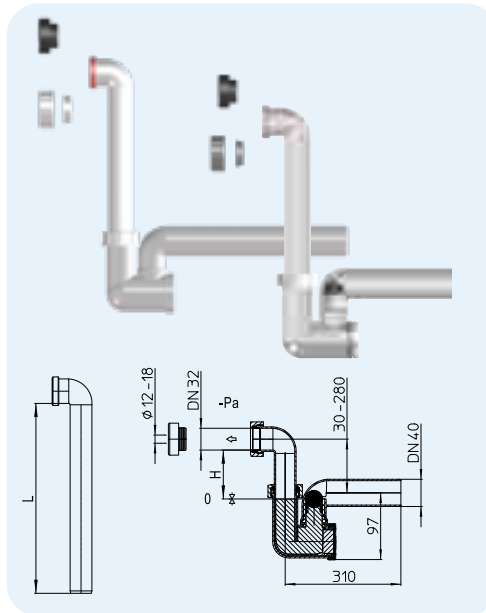
HL-No.	Dimension	Weight	EAN	Piece/package
136.2	DN40	364 g	+008223	10

HL136N Stench trap for condensate with seal water and mechanical ball trap
HL136NT Transparent stench trap for condensate with seal water and mechanical ball trap

Data

Capacity 0,37 l/s
 Material PP
 Connection DN32 with locking nut
 dimension Ø 12-18 mm for plugging
 Outlet dimension DN40
 Stench trap 60mm seal water with additional mechanical ball trap
 Standard DIN 19541, EN 12056
 Recommended for Air conditioners, ventilation- and heating devices
 Additional information also odourless without seal water, possible inlet horizontal and vertical

-Pascal	H	L
< -300	30	80
(-300)-(-500)	30-50	80
(-500)-(-700)	50-70	100
(-700)-(-900)	70-90	120
(-900)-(-1100)	90-110	140
(-1100)-(-1300)	110-130	160



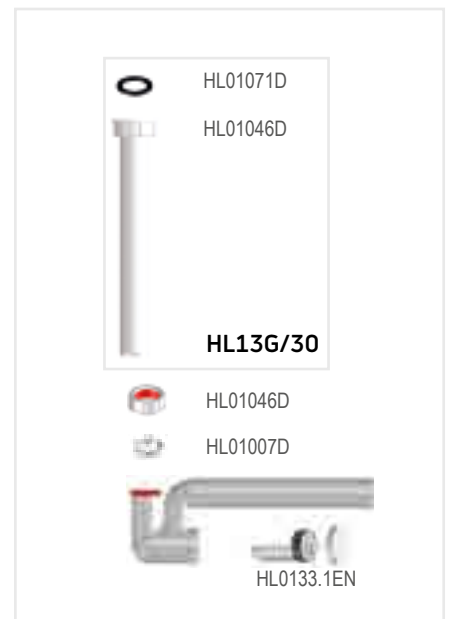
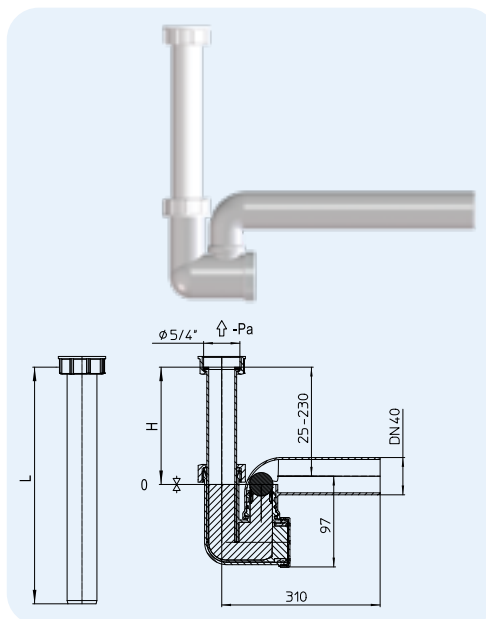
HL-No.	Dimension	Weight	EAN	Piece/package
136N	DN40 x DN32 or Ø 12 - 18 mm	230 g	+018390	10
136NT	DN40 x DN32 or Ø 12 - 18 mm	230 g	+036288	10

HL136.3 Stench trap for condensate with seal water- and mechanical ball trap

Data

Capacity 0,37 l/s
 Material PP
 Connection 5/4"
 Outlet dimension DN40
 Stench trap 60mm seal water with additional mechanical ball trap
 Standard DIN 19541, EN 12056
 Recommended for Air conditioners, ventilation- and heating devices
 Additional information also odourless without seal water

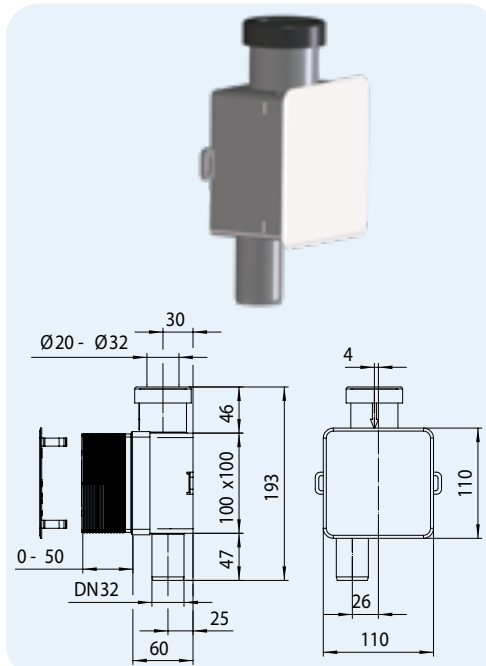
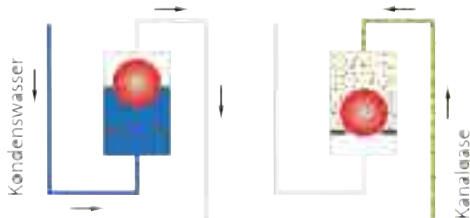
-Pascal	H	L
< -300	30	80
(-300)-(-500)	30-50	80
(-500)-(-700)	50-70	100
(-700)-(-900)	70-90	120
(-900)-(-1100)	90-110	140
(-1100)-(-1300)	110-130	160



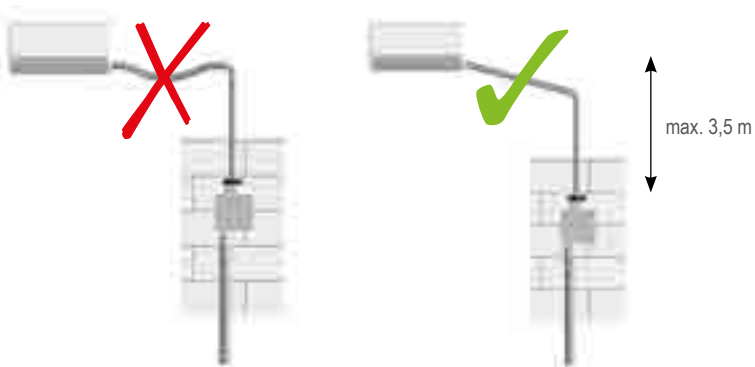
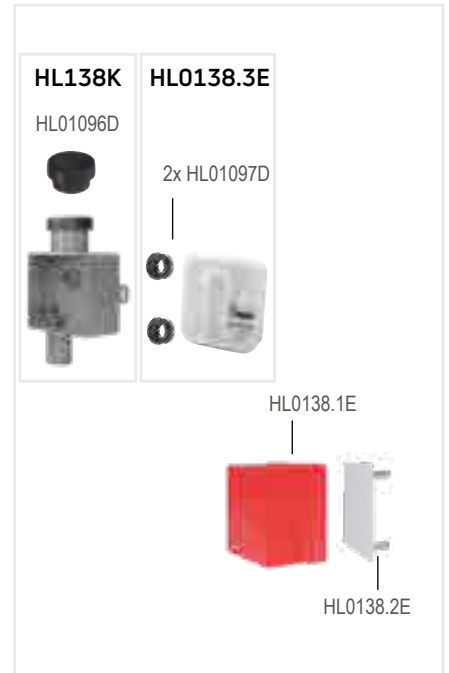
HL-No.	Dimension	Weight	EAN	Piece/package
136.3	DN40 x 5/4"	230 g	+011889	10

HL138 Flush mounted stench trap for condensate
Data

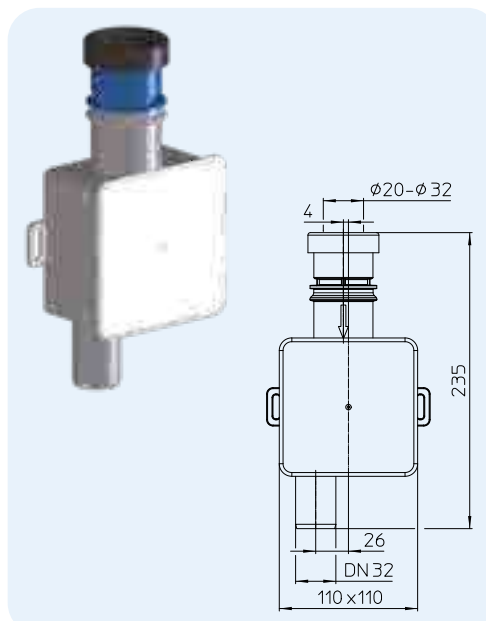
Capacity	0,15 l/s
Material	PP
Connection dimension	For connecting pipes from $\varnothing 20 - 32$ mm and minimal inner dimension of a pipe $\varnothing 18$ mm
Outlet dimension	DN32
Stench trap	50 mm seal water, additional with ball as mechanical odour barrier
Standard	DIN 19541
Recommended for	Air conditioners, ventilation- and heating devices
Additional information	also odourless without seal water, removable siphon cartridge



HL-No.	Dimension	Weight	EAN	Piece/package
138	DN32 x $\varnothing 20 - 32$ mm	280 g	+030705	10


HL138H Flush mounted stench trap for condensate with hygienic adapter
Data

Capacity	72 l/h
Material	PP
Connection	For connecting pipes from 20 - 32 mm and minimal inner pipe diameter 18mm
Outlet dimension	DN32
Stench trap	50 mm seal water, additional with ball as mechanical odour barrier
Standard	ÖNORM H 6020, VDI 6022, DIN 19541
Recommended for	drainage of condensate water of air conditioners, ventilation and heating devices, especially for e.g. hospitals, clinical institutions and care homes acc. ÖNORM H 6020 2015;
Additional information	also odourless without seal water; removable siphon cartridge; With Austian hygienic certificate (please see www.hl.at)



HL-No.	Dimension	Weight	EAN	Piece/package
138H	DN32 x $\varnothing 20 - 32$ mm	300 g	000166	1

